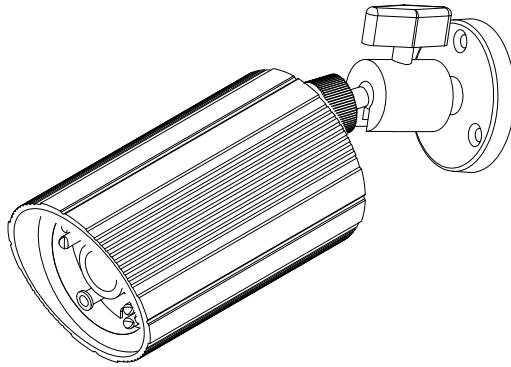


Infrared Illumination Camera



Instruction Manual



VER.:1.0, NO.:R040145

Thank you very much for purchasing our product. Before operating this product, please read this instruction manual carefully to ensure proper use.

1. Safety Precautions

	CAUTION RISK OF ELECTRIC SHOCK. DO NOT OPEN!	
CAUTION : TO REDUCE THE RISK OF ELECTRICAL SHOCK, DO NOT OPEN COVERS. NO USER SERVICEABLE PARTS INSIDE. REFER SERVICING TO QUALIFIED SERVICE PERSONNEL.		



Disposal of Old Electrical & Electronic Equipment (Applicable in the European Union and other European countries with separate collection systems).

- ◆ When in use, please avoid directly contacting the eyes and do not touch the camera body, for it can be heated up to 70°C.
- ◆ When installing the camera, please avoid pointing it directly to paper or flammable materials.
- ◆ The camera is normal to be heated up to 70°C, under operation.
- ◆ Although the camera is provided with tempered glass, please avoid all direct contact to eliminate contamination, and use cotton balls dipped in cleaning alcohol to clean the window.

2. Description

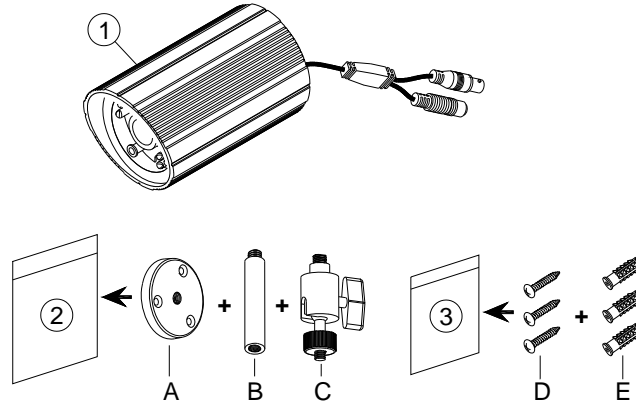
This inbuilt Infrared Illuminator camera uses a high sensitive 1/3" interline transfer Charge Coupled Device (CCD) Image Sensor, and all state circuitry, which provides extremely long life and high reliability. Offers excellent image quality and functions with low lag and high burn resistance. IR illuminator module has power saving features, built-in with automatic light-source control (CDS CONTROL)/ the infrared illuminator is activated automatically (ON/ OFF) when the luminous intensity drops.

Highly resistant to shock and vibration, easy to install, it is an excellent choice for your CCTV system.

3. Feature

- ◆ With built-in high quality CCD Camera and high performance Infrared Illuminator modules.
- ◆ Infrared Illuminator has effective range up to 20/ 30 meters and wide angle at 80°, also assists cameras in providing a clear image when under completely dark area.
- ◆ Infrared Illuminator has built-in 24/ 36 pieces 850nm wavelength infrared Light-Emitting Diode and provides over 6000 hours life.
- ◆ Built-in Cds light-source sensor can automatically turn on/off the infrared illuminator by detecting the light source of environment.
- ◆ Waterproof suitable for indoor and outdoor use.

4. Contents



Item	Name of Part	Quantity
1	Camera	1
2	Mounting Bracket Bag	1
	A Base plate (optional)	1
	B Supporting Arm	1
	C Mounting Bracket	1
3	Appurtenance Bag	1
	D Fix retaining screw for Bracket	3
	E Anchor	3

5. Installation & Operation

- (1) Use the 3 screws provided to attach the mounting bracket to the surface or wall, assemble all spare parts to the base plate and tighten the camera wingnut (as shown on Figure 1).

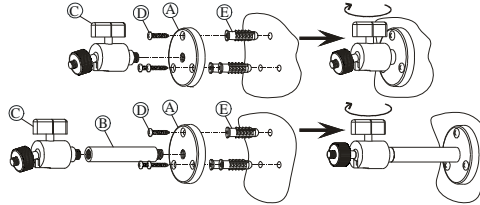


Figure 1

- (2) Screw the mounting bracket into the camera mounting post; then adjust the camera to approximate location and tighten the camera wingnut (as shown on Figure 2).

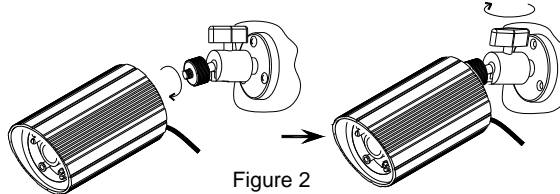


Figure 2

- (3) Connect the video output and the power input.

6. Specification

According to the camera purchased, select and refer to the appropriate specification below:

Color Camera				
Image Device	1/3" Color Sony Super HAD	1/3" Color Sony Hi-Res. Super HAD	1/4" Color Sony	
Picture Elements	NTSC: 510x492 PAL: 500x582	NTSC: 768x494 PAL: 752x582	NTSC: 510x492 PAL: 500x582	
Resolution	380 TVL	470 TVL	330 TVL	
Min. Illumination	0.2 Lux/ F2.0	0.3 Lux/ F2.0	0.5 Lux/ F2.0	
S/N Ratio	More than 48 dB			
Electronic Shutter	NTSC: 1/60~1/100,000, PAL: /50~1/110,000			
Gamma	0.45			
Lens Furnished	24 PCS. LED: Board Lens 3.6 mm/ F2.0 (optional: 4.3/ 6.0/ 8.0/ 12/ 16 mm) 36 PCS. LED: Board Lens 6.0 mm/ F2.0 (optional: 8.0/ 12 mm)			
White Balance	Auto			
Gain Control	Auto			
Sync. System	Internal			
Video Output	1 Vp-p/ 75 Ohms			
Power Supply	DC 12V±10%			
Power Consumption (DC 12V)	IR OFF	DC/ 160mA max	DC/ 200mA max	DC/ 160mA max
	24 IR LED ON	DC/ 420mA max	DC/ 560mA max	DC/ 420mA max
	36 IR LED ON	DC/ 540mA max	DC/ 690mA max	DC/ 540mA max
B/W Camera (24 IR LED only)				
Image Device	1/3" B/W Sony Super HAD	1/3" B/W CCD		
Picture Elements	EIA: 510x492 CCIR: 500x582	EIA: 510x492 CCIR: 500x582		
Resolution	420 TVL	400 TVL		
Min. Illumination	0.1 Lux/ F2.0	0.3 Lux/ F2.0		
S/N Ratio	More than 48dB			
Electronic Shutter	EIA: 1/60 ~ 1/100,000, CCIR: 1/50 ~1/110,000			
Gamma	0.45			
Lens Furnished	Board Lens 3.6mm / F2.0 (optional: 4.3 / 6.0 / 8.0 / 12mm)			
Gain Control	Auto			
Sync. System	Internal			
Video Output	1 Vp-p/ 75 Ohms			
Power Supply	DC 12V±10%			
Power Consumption (DC 12V)	IR OFF	DC/ 175mA max		
	24 IR LED ON	DC/ 400mA max		

Infrared Illuminator Module	
Infrared Luminary	24/ 36 pieces IR-LED, life: 6000hrs.
Wavelength	850 nm
Illuminate Distance	20M (24 IR LED)/ 30M (36 IR LED)
Auto Power On/ Off	Cds auto control
System Device	
Operating Temp.	-10°~50°C (14°~122°F)
Construction	Aluminum Case
Filter	Tempered Glass
Waterproofing Criterion	IP66
Weight	0.65 Kg
Dimensions	φ70 x 120 (L) mm (Body only)

(Note: Design and specifications are subject to change without prior notice.)