

Central Monitoring Software



User's Manual

Ver1.1.0.10

CMS

Digital Video Recorder

The most stable and reliable real stand-alone Digital Video Multiplex Recorder

Preface	CMS Introduction	-----	2
CHAP. 1	How to log in CMS program	-----	3
CHAP. 2	Composition of User Interface		
2-1.	Live Display Window	-----	4
2-2.	PlayBack Display Window	-----	5
2-3.	Setup Mode Display Window	-----	6
2-4.	Group Setup Display Window	-----	7
CHAP. 3	Setup		
3-1.	CMS Setup	-----	8
3-2.	Site Setup	-----	9
3-3.	Text Type Setup	-----	10
CHAP. 4	Group Setup		
4-1.	Outline of Group Function	-----	11
4-2.	How to add a Group	-----	12-13
CHAP. 5	Live		
5-1.	Outline of Live Mode	-----	14-15
5-2.	How to Connect	-----	16
5-3.	How to disconnect	-----	17
5-4.	How to switch from Multi-Split Mode to Full Screen Mode	-----	17
CHAP. 6	PlayBack		
6-1.	Outline of PlayBack Mode	-----	18,19,20
CHAP. 7	Remote Setup		
7-1.	Configuration	-----	21-24
7-2.	Record	-----	25-26
7-3.	External	-----	27-28
CHAP. 8	Event Logger		
8-1.	Outline of Event Logger	-----	29-30
8-2.	Explanation of Each Menu	-----	31-35

Preface : CMS Introduction

Our Central Monitoring System can simultaneously connect to 32 digital video recorders Simultaneously at one screen. Each camera can be individually displayed in live or Playback mode. And other features include event logging, remote setup, PTZ etc.

Recommended PC specs.

CPU : Pentium IV processor

RAM : 128MB

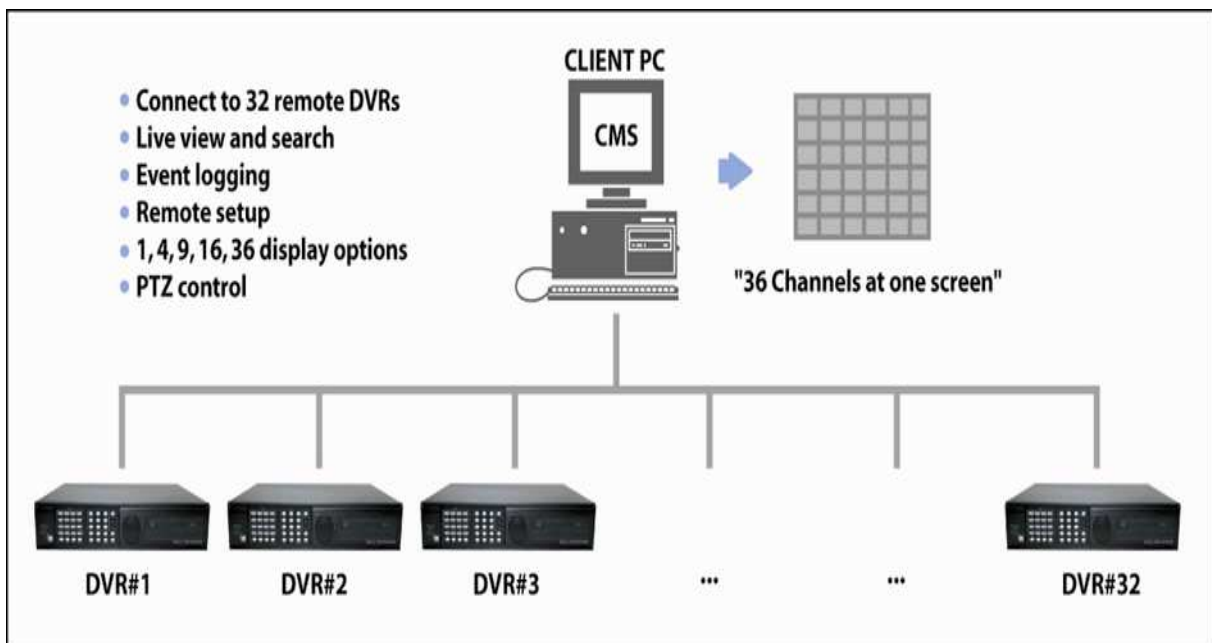
HDD Space : 10 MB Free Space

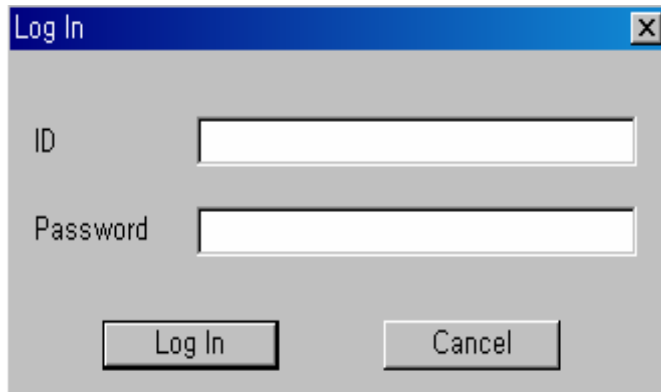
O/S : Windows 2000, XP and Vista will be supported

Monitor resolution : 1024 * 768

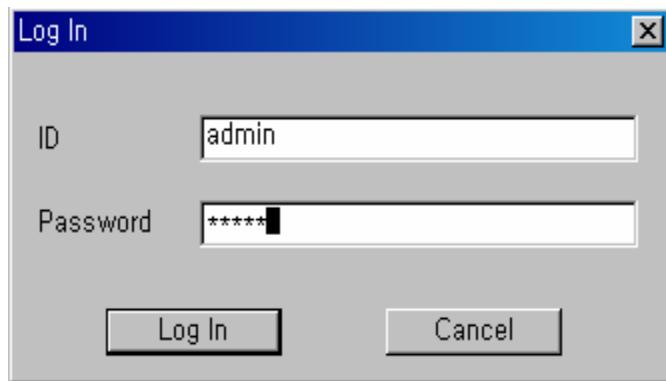
Available DVR model/Firmware version

JAD-U & AIO-U Series/ Firmware ver 4.XXX.



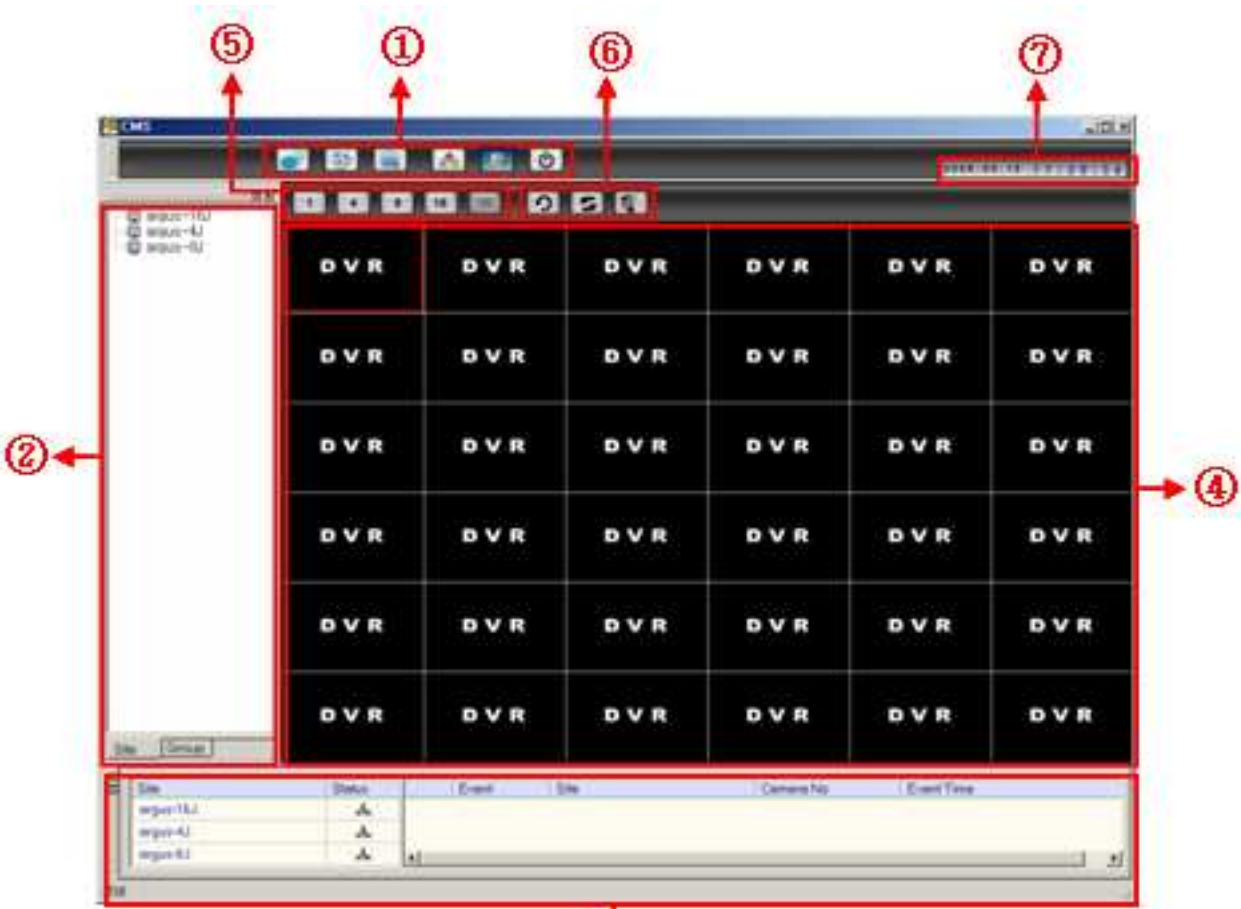
CHAP. 1 How to log in CMS program






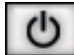
- ① When you first run CMS program, you see this Log-In Window.



- ② Type 'admin' for ID & Password. Then, click 'Log In' for the initial log in.

CHAP. 2 Composition of User Interface

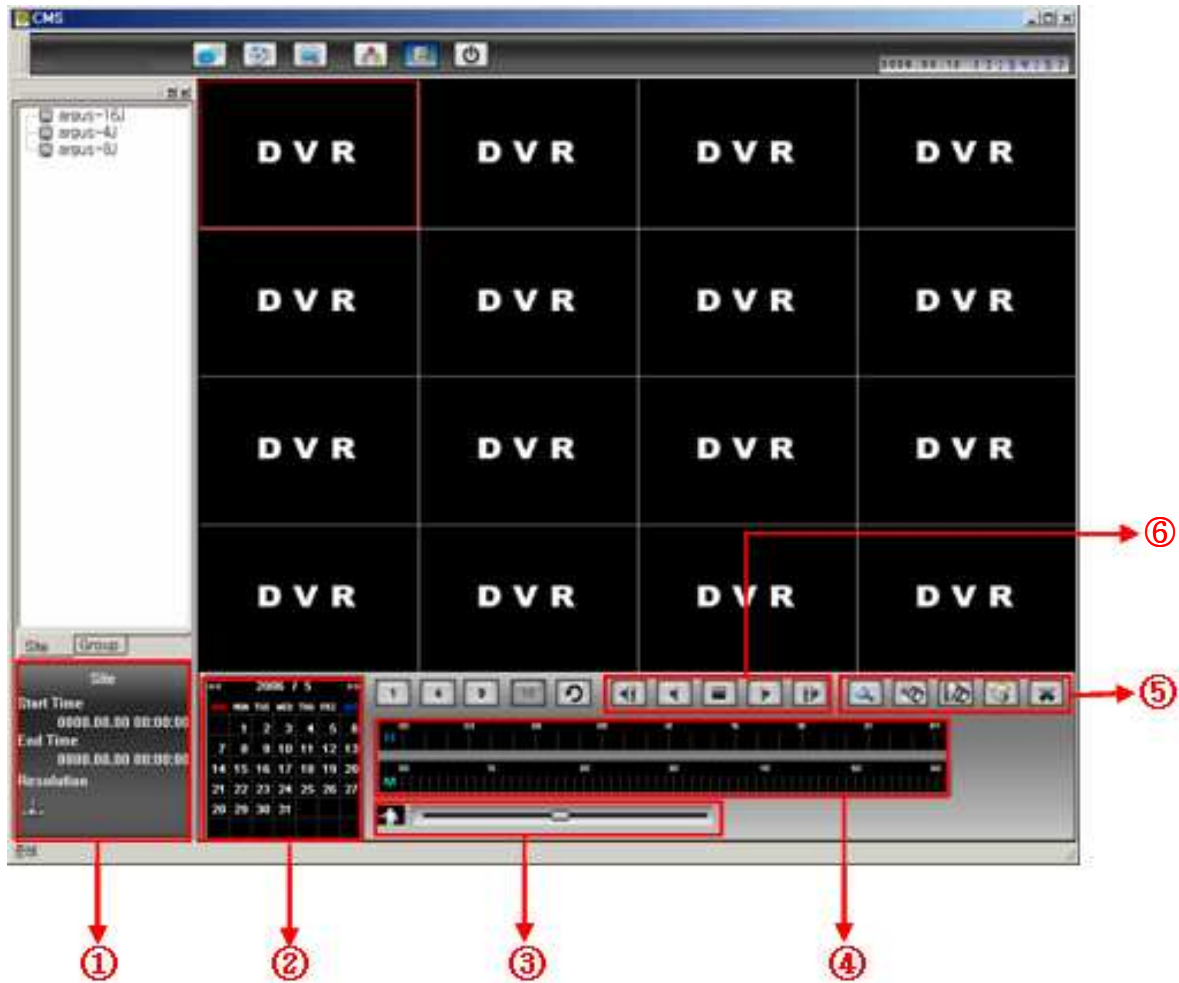


-  Setup : shows Setup window
-  Group Setup : Shows Group Setup Window
-  Search : Transfers to Search Mode
-  View Tree : Shows Site Tree Window
-  View Event : Shows Event List Window
-  Exit : Exit Program

- ② Registered Site and Group Information list box
- ③ Connection Status Display and Event List Display box
- ④ Split Screen of Image Display
- ⑤ Icons for Channel Split Selection (1 , 4 , 9 , 16 , 36)
- ⑥ Rotation , Auto Rotation , P/T/Z
- ⑦ Current Time Display

CHAP. 2 Composition of User Interface


2-2. PlayBack Display Window

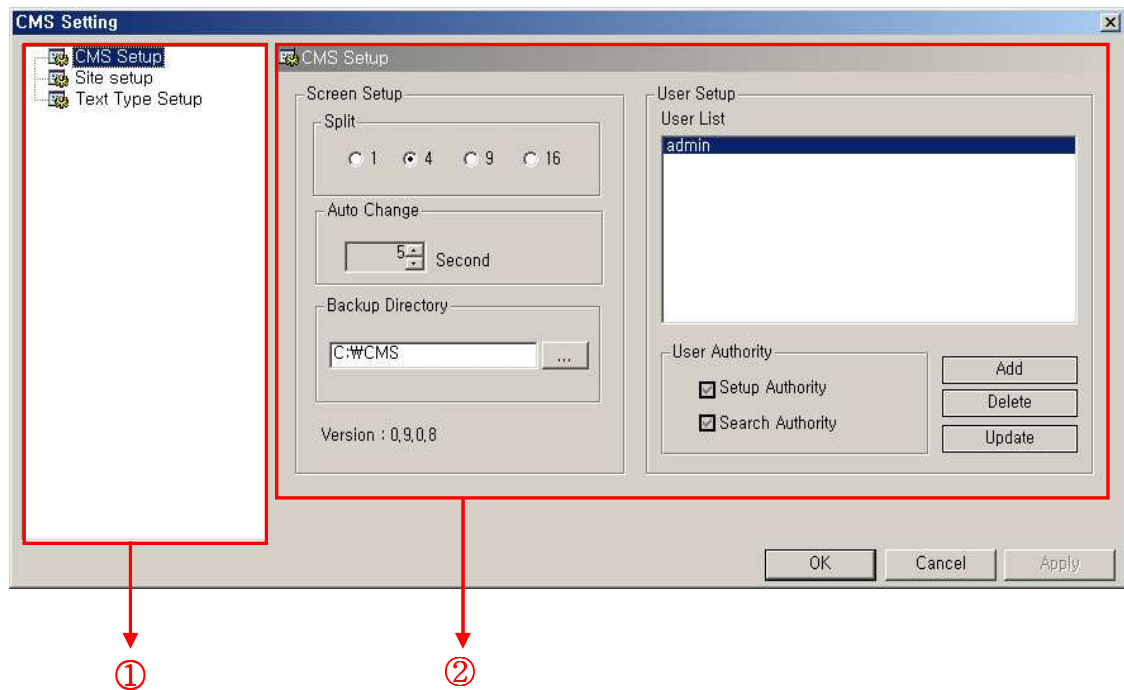


- ① Start & End Time Display of Recorded Images from a Connected Site
- ② Recorded Date Display
- ③ Playback Speed Selection Bar
- ④ Time Selection Bar of Recorded Images
- ⑤ Buttons for Search Event , Save Image , Save Avi , Print , Close Search
- ⑥ Control Buttons for Image Display

CHAP. 2 Composition of User Interface

2-3. Setup Mode Display Window


- Click  icon, then you see setup window shown below.

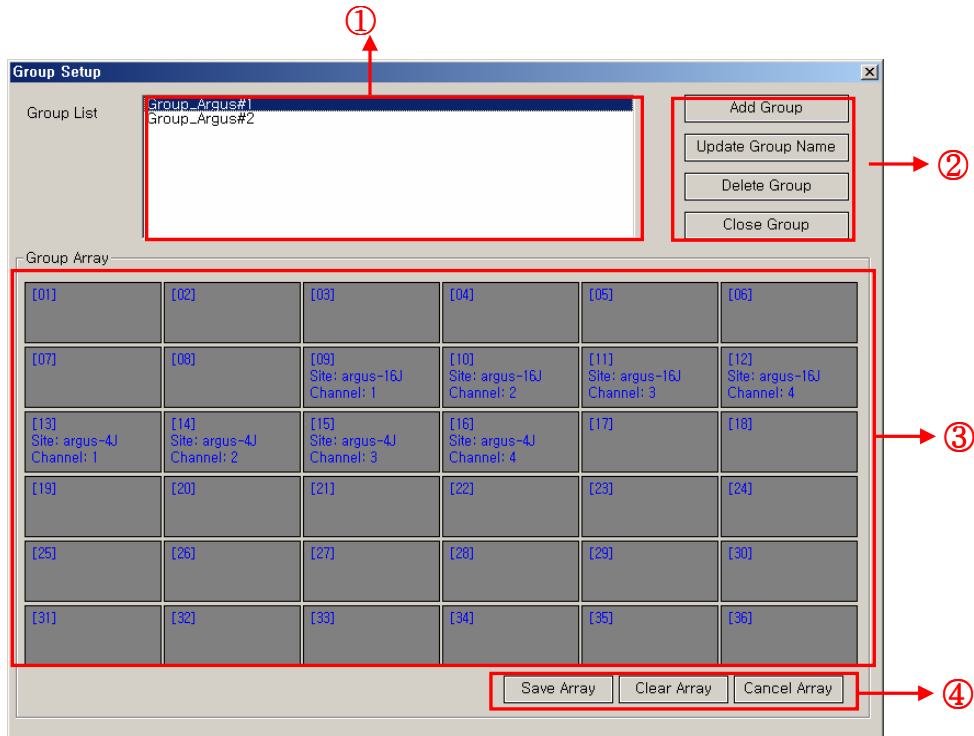


- ① Setup List
(CMS Setup, Site Setup, Text Type Setup)
- ② Setup Display
(Screen Setup and User Setup)

CHAP. 2 Composition of User Interface

2-4. Group Setup Display Window


– Click  icon, then you see setup window shown below.

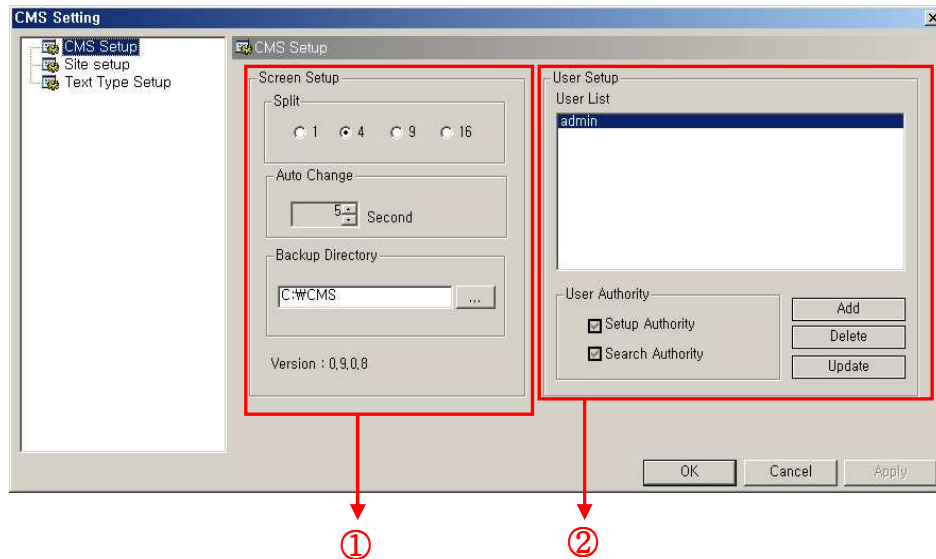


- ① Registered group list box
- ② Buttons for Group Management
- ③ Channel Array saved in a group
- ④ Buttons for Group Array Management

CHAP. 3 Setup

3-1. CMS Setup

- Click  icon, then you see setup window shown below.



① Screen Setup

- Split : Initial Split Display Setup
(When you first run the CMS program, you can see this initial split image display as you selected. 1/4/9/16)
- Auto Change : Duration Setup of Auto Rotation
(Use arrow buttons to adjust duration 5~60 sec)
- Backup Directory : Selects Backup Directory
(You can choose a backup directory that backup images will be saved.)
- Version : Version Information of CMS program

② User Setup

- User List : CMS User List
- User Authority : Authority given to an User
 - + Setup Authority : You can grant authority to an user to manage setup.
 - + Search Authority : You can grant authority to an user for search mode.

Click 'Add' button to add a user in this list.

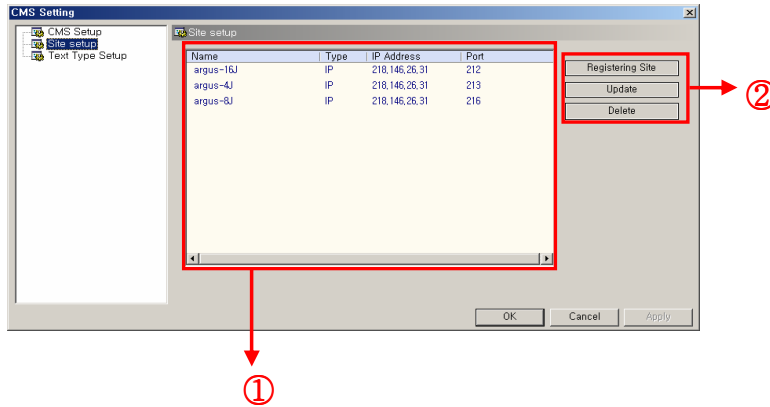
Type a user name as you want in 'User Name' text box.

Put a password that you want and confirm it again.

Choose authority that you want to grant to an user. Then, click 'OK' button.

CHAP. 3 Setup

3-2. Site Setup



① Registered Site List

② Registration

Site Registration Window

- Site name : Site Name to be connected
(You can name it as you want. For example, parking lot#1)
- Type : You can input IP address manually or automatically via DDNS.

(Manual)

- It connects to the IP Address that you input manually.
- Address : IP Address of a Site to be connected to.
 - Port Number : Port Number of a Site to be connected to.
 - User ID : User ID already registered in a DVR.
 - Password : Password already registered in a DVR.

(DDNS)

- It connects to the IP address assigned from DDNS Server.
- + Member ID : Member ID for Connecting to DDNS Server.
 - + Name : DVR Name Registered in DDNS Server.
- After you input Member ID & Name, click 'Connect' button. Then, it automatically shows IP address & Port Number. In the last place, input User ID & Password and click 'OK' button.

③ Update

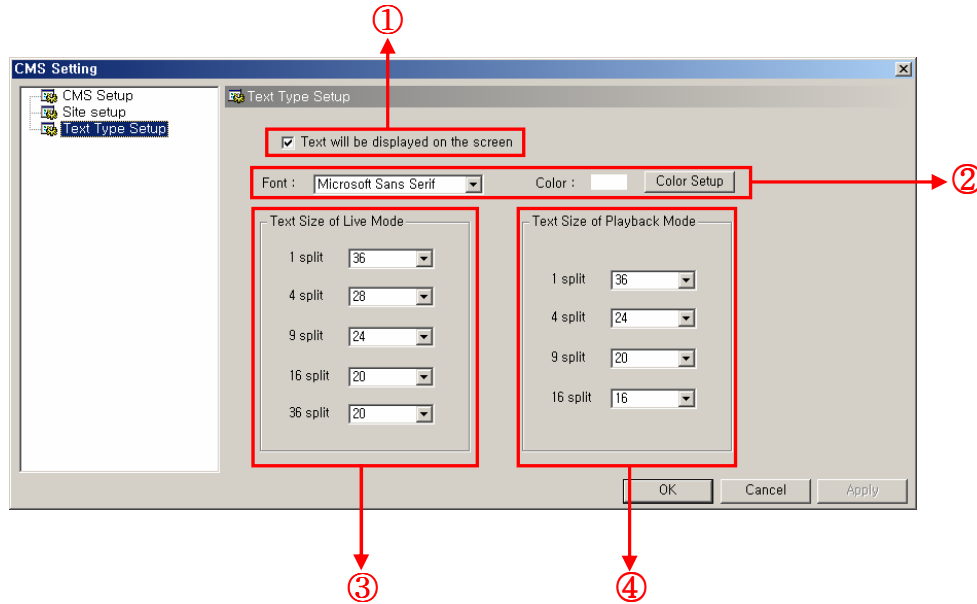
If you want to change the setup of a site which has been already registered, click 'Update' button.

④ Delete

If you want to delete a site, choose the site in the site list box and click 'Delete' button.

CHAP. 3 Setup

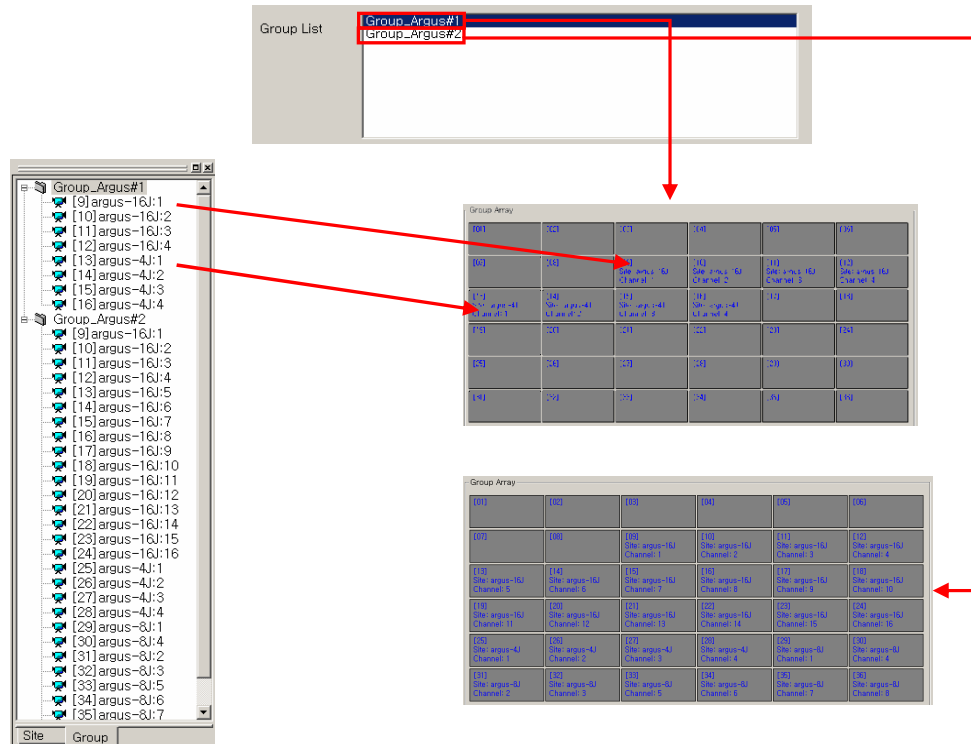
3-3. Text Type Setup



- ① Check box for OSD Display on the screen
(If you don't want to see text on the screen, empty this check box.)
- ② OSD font & Text Color Setup
- ③ OSD Size Setup on each Split Mode for Live View
- ④ OSD Size Setup on each Split Mode for Playback

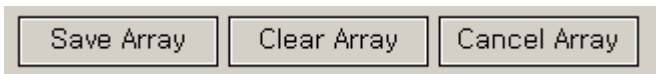
CHAP. 4 Group Setup

4-1. Outline of Group Function



Group Function :

Allows you to monitor various images from different sites on one screen.




Save Array : Saves Channels selected in Group Array

Clear Array : Clear all channels selected in Group Array

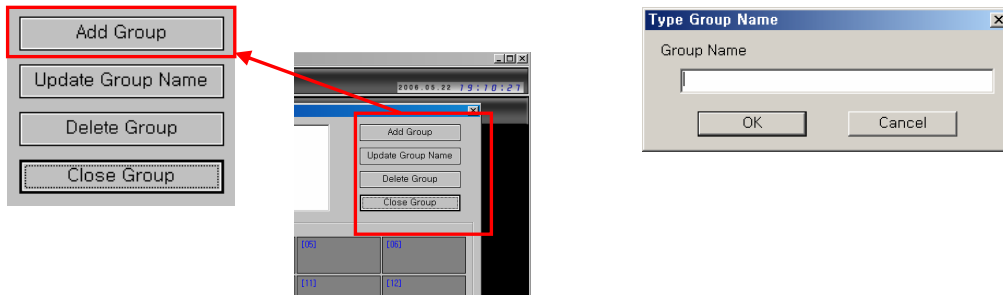
Cancel Array : Cancel the channels added before clicking 'Save Array' button.

CHAP. 4 Group Setup

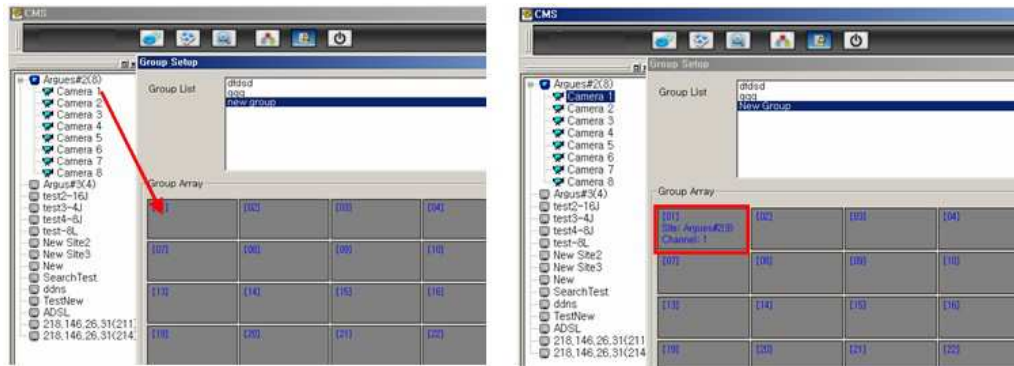
4-2. How to add a Group

– Click  Icon to see the group setup window.

- 1) Press 'Add Group' button and input a new name of a group. Then, click 'OK' Button.



- 2) From the View Tree (site tab) shown below, pick cameras of a connected site and drag & drop onto a group array.

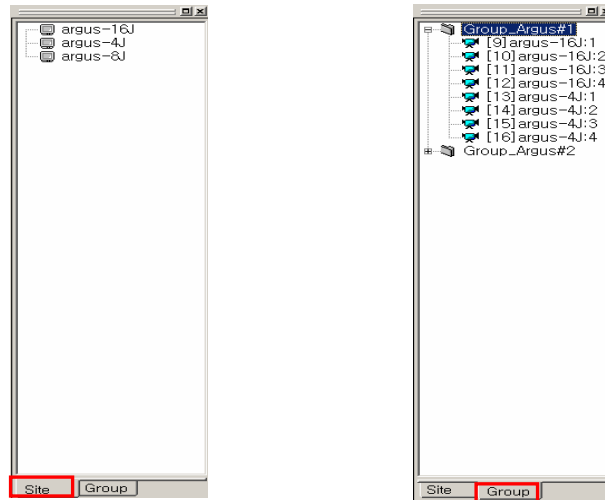


< Before >

< After >

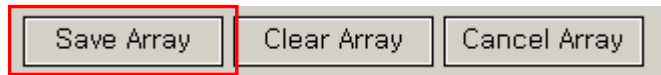
CHAP. 4 Group Setup

– Site & Group View Tree Window showing Registered Sites & Group Information

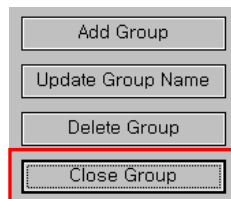


< View Tree Window >

3) Save the added Array by pressing 'Save Array' button.



4) To exit, click 'Close Group' button. Then, we see the group list as shown in <View Tree Window> above.



CHAP. 5 Live

5-1. Outline of Live Mode

- ① Event List Window showing Registered Sites & Connection Status

Site	Status	Event	Site	Camera No	Event Time
argus-16J					
argus-4J					
argus-8J					

- ② Split Display Screen showing Images



- ③ Buttons for selection of split mode (1/ 4/ 9/ 16/ 36)



CHAP. 5 Live

④ : Rotation , Auto Rotation , P/T/Z



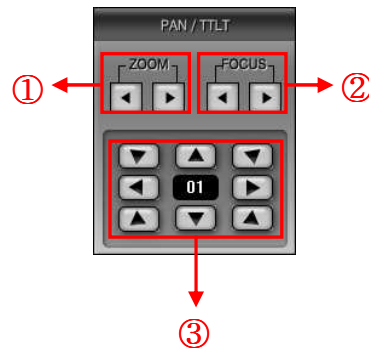
Rotation : Click this button to see the next image



Auto Rotation : It shows the next image automatically.



P/T/Z : P/T/Z camera control button
(When you press this button, you will see the window shown below. If you press this button one more time, this window will disappear.)



- ① : Zoom In/Out Arrow Buttons
- ② : Focus Adjustment Buttons
- ③ : Pan/ Tilt Control Buttons

⑤ : Current Time Display Window



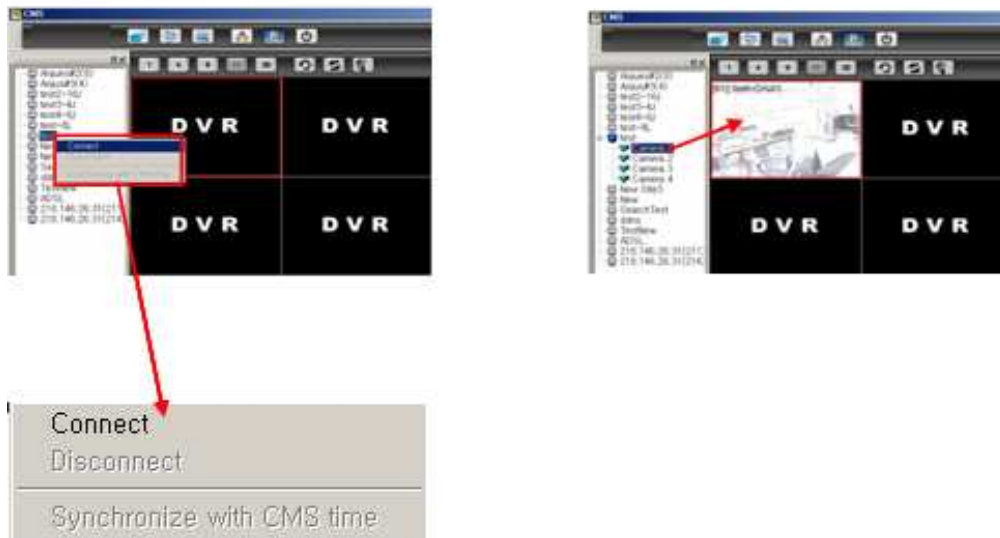
CHAP. 5 Live

5-2. How to Connect

- How to drag a Site onto on the screen



- After 'Right-Click' and select 'Connect' on each site, drag cameras onto the screen.



- * Pop-up Menu of Site Tree Window
 - Connect : Connects to the Site that you select
 - Disconnect : Disconnects from the Site that you selected
 - Synchronize with CMS time : Synchronizes CMS program time with DVR time

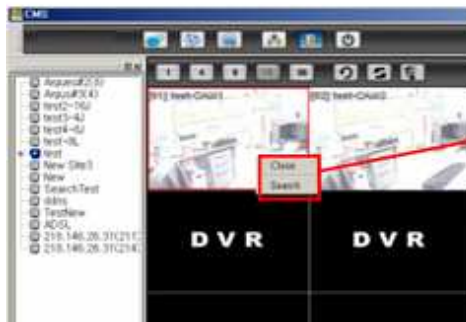
CHAP. 5 Live

5-3. How to disconnect

- After 'Right-Click' on the site that you want to disconnect and choose 'Disconnect' for disconnection.

5-4. How to switch from Multi-Split Mode to Full Screen Mode

- Double-Click the image on split screen that you want to see in a full screen.
- Double-Click again, then you can go back to Multi-Split Mode.



* Right-Click on a image then you will see this popup menu.

Close : Close a chosen image
Search : Go to Playback Mode

CHAP. 6 PlayBack

6-1. Outline of PlayBack

- ① Playback Mode Display
: Shows Recording start time, end time, size of image and connection status.



- ② Calendar Display
: Shows recorded dates.
The yellow color indicates recorded dates and the red color indicates the end date.



- ③ Playback Speed Bar
: Adjusts playback speed.
(Unable to use while playback is running)



CHAP. 6 PlayBack

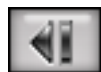
④ Time Selection Bar

: Shows Time (Hours and Minutes) of Recorded images so that you can select the recorded images of a certain time that you want to see.



< With one click, you can move a red box to other location that you want to choose.>

⑤ Control Buttons for Image Display



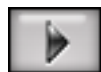
Previous Image : Shows the previous image (one by one)



Play backward : Plays backward



Stop : Stops playing



Play : Plays images



Next Image : Shows the next image (one by one)

CHAP. 6 PlayBack

- ⑥ Icons for special functions
(Search Event , Save Image , Save Avi , Print , Close Search)



Search Event : Shows Event List



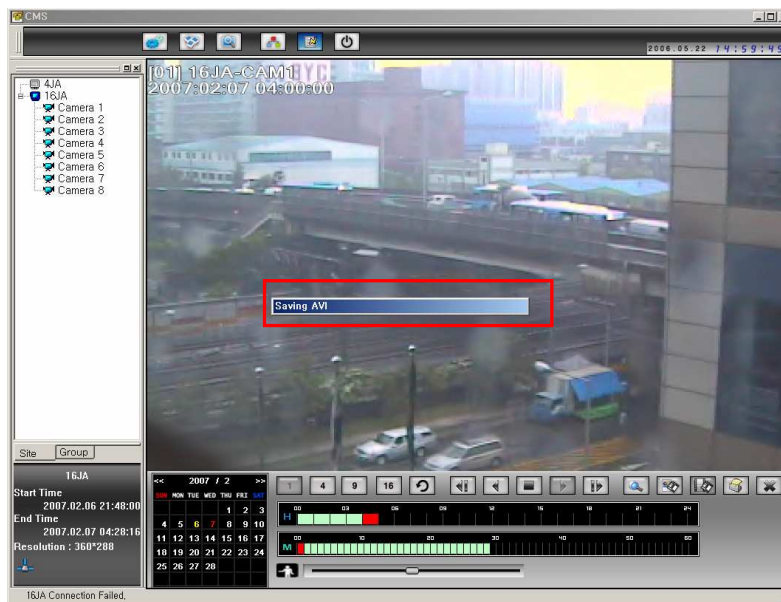
Save Image : Saves an Image in JPG file



Save Avi : Saves in AVI file (Only available on a full screen mode)

Stop playing and click this button, then you see 'Saving AVI' Bar one the screen.

Click this button again, then it stops making AVI file.

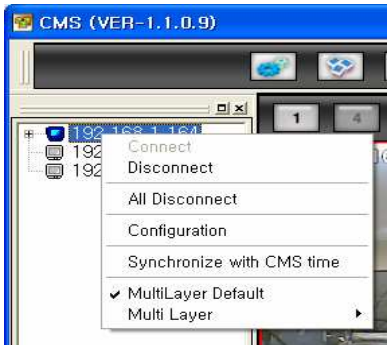


Print : Prints a image using a printer



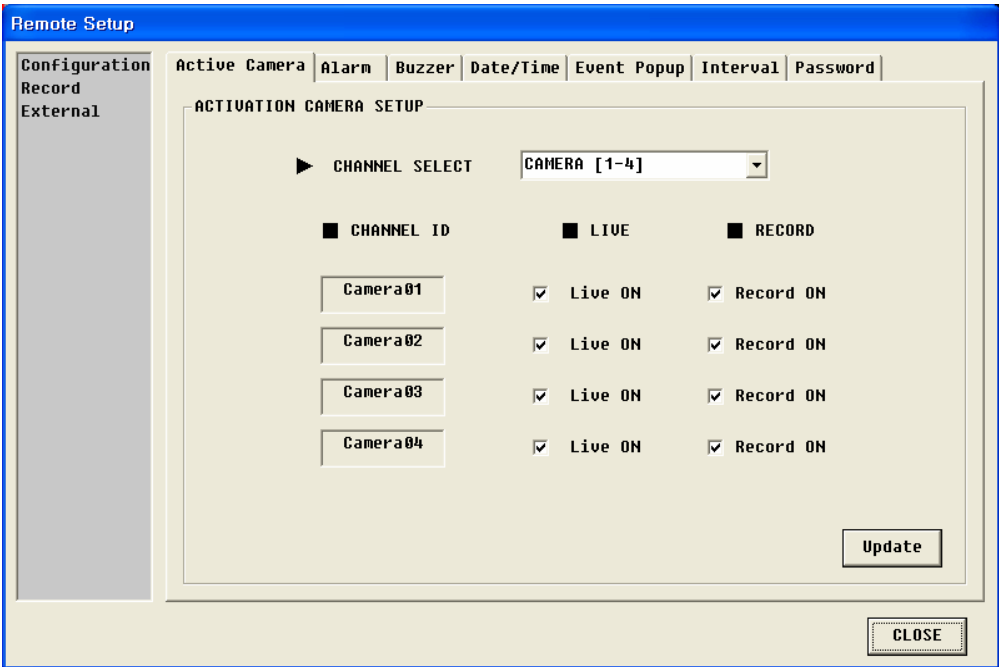
Close Search : Closes Playback Mode and goes back to Live Mode

7. CMS Remote Configuration : It works by POPUP Window.

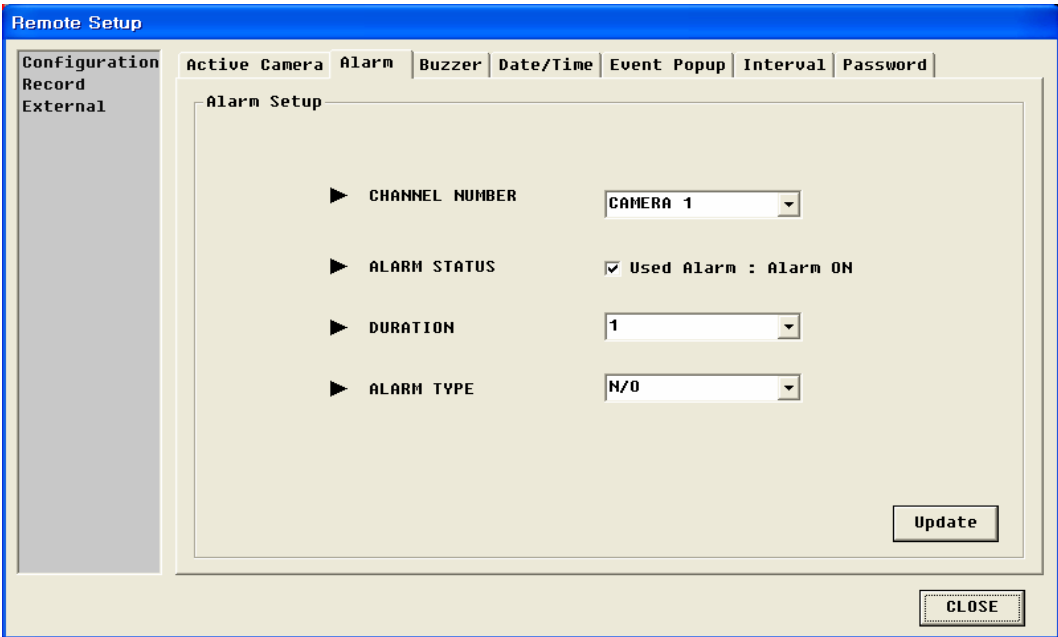


7-1 Configuration : DVR setting can be changed from remote site. It activated after connection.

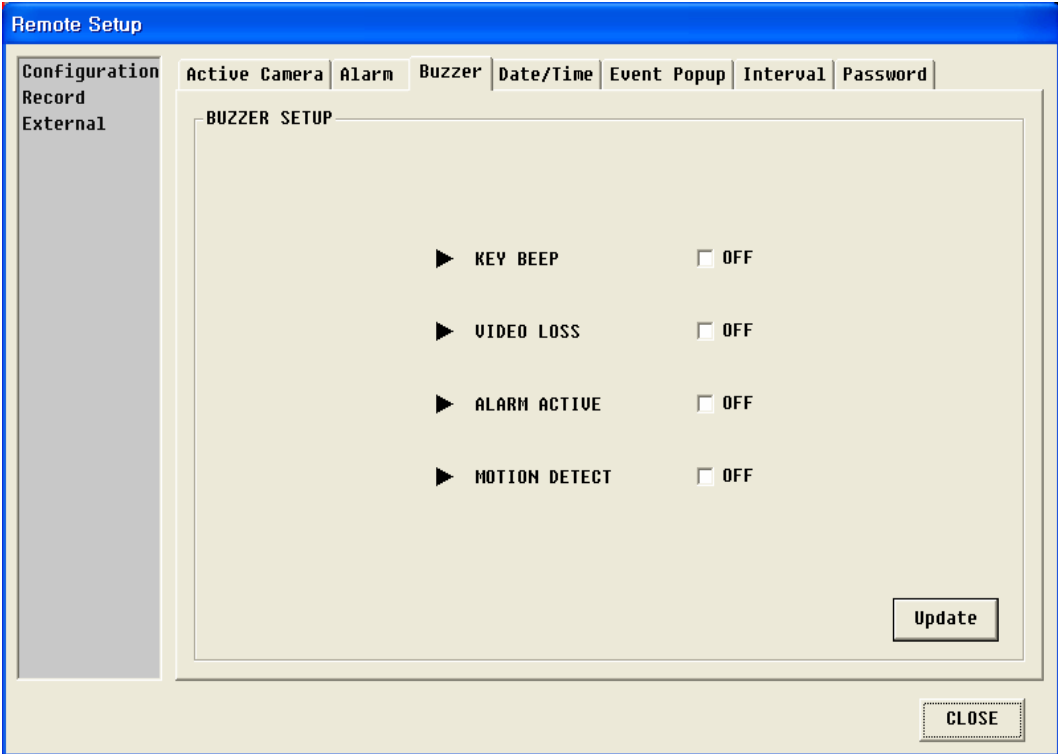
Active Camera : Choose Each channel camera and LIVE, RECORD ON & OFF.



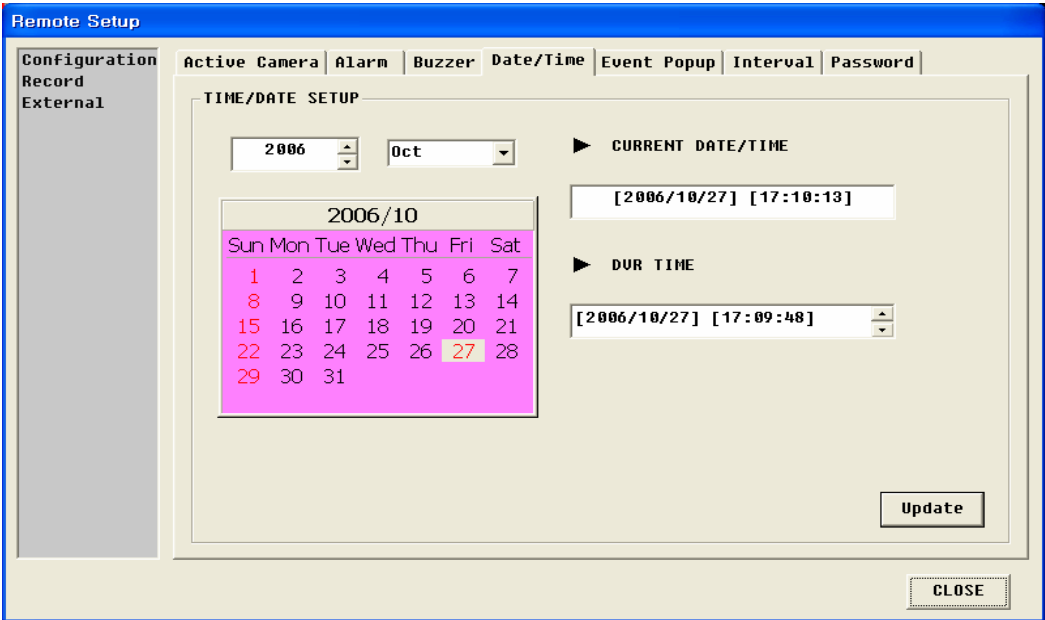
Alarm Setting : Choose Sensor input connected to DVR



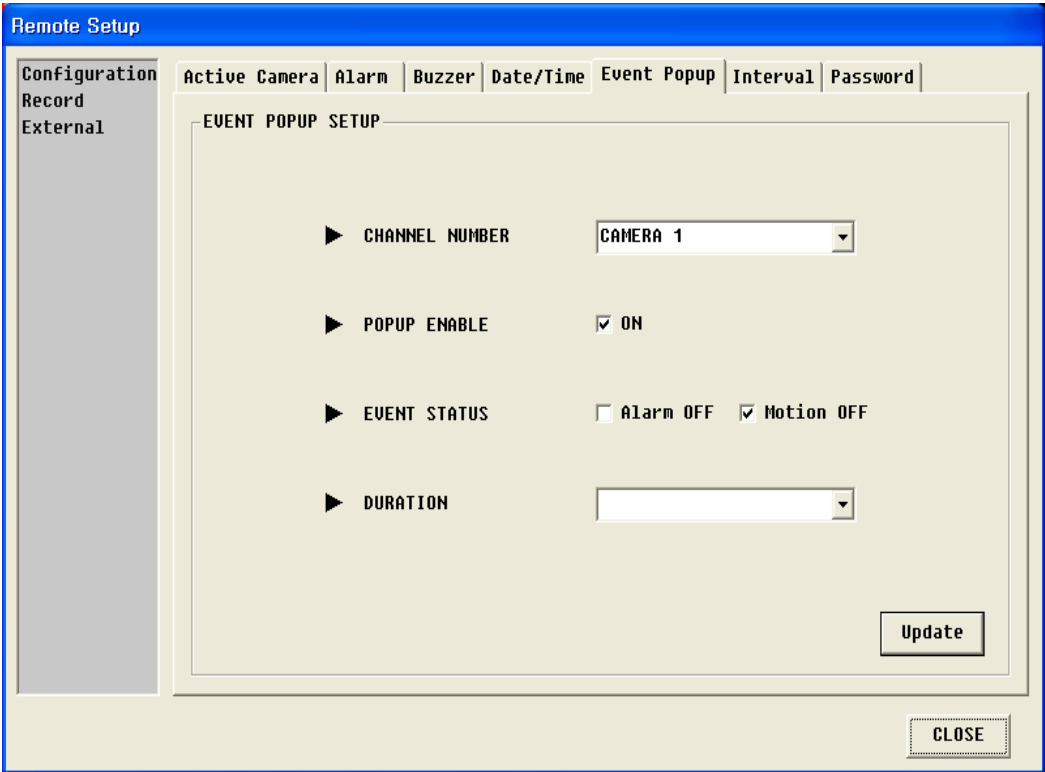
Buzzer Setting : Set DVR Buzzer ON/OFF



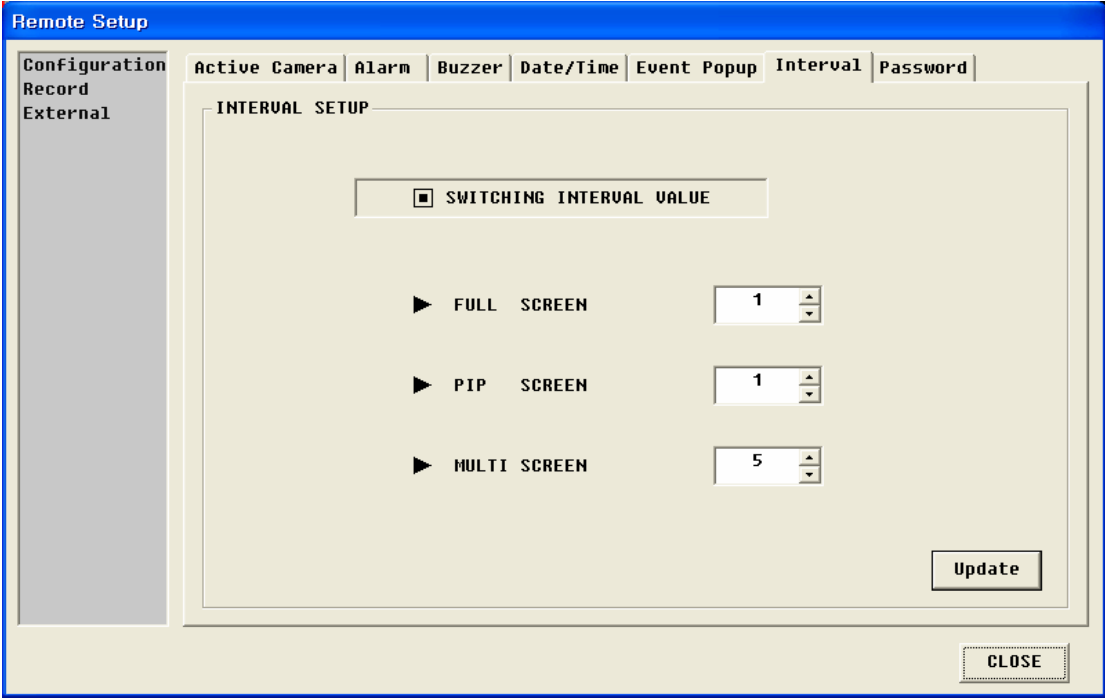
Date/Time Setting : Set Time/Date of DVR



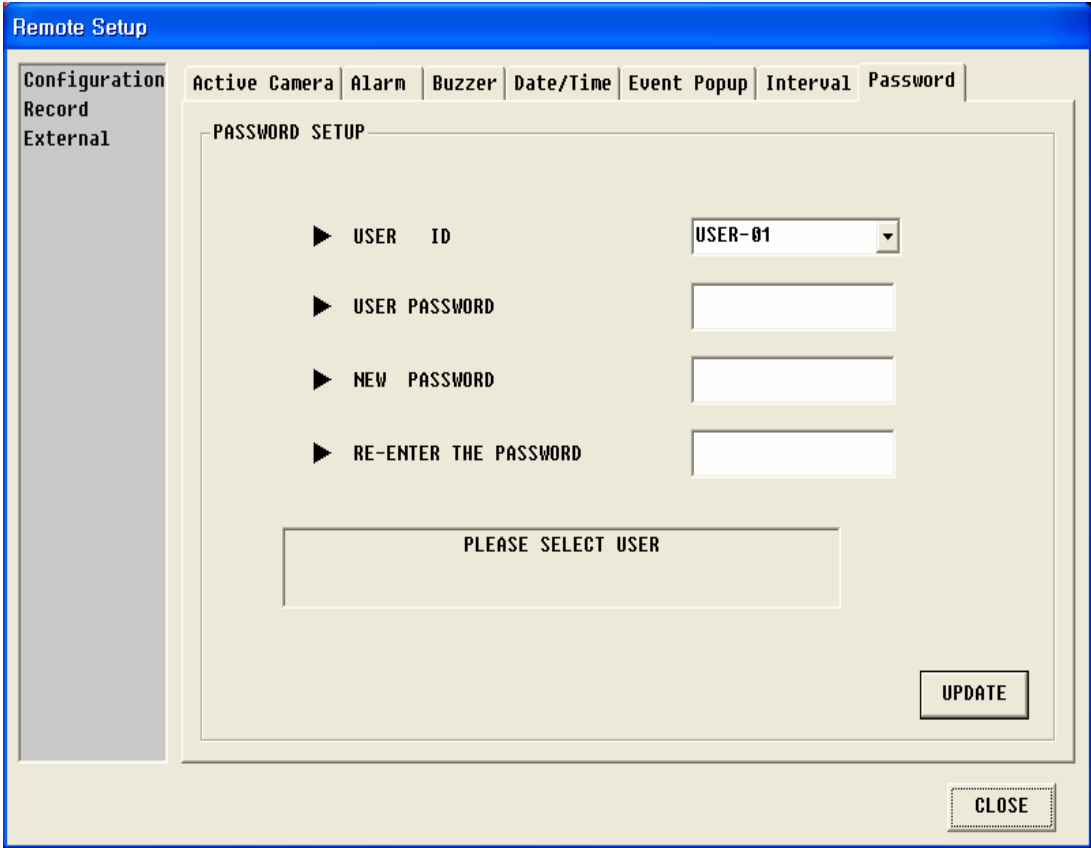
EVENT POPUP Setting : EVENT POPUP Setting



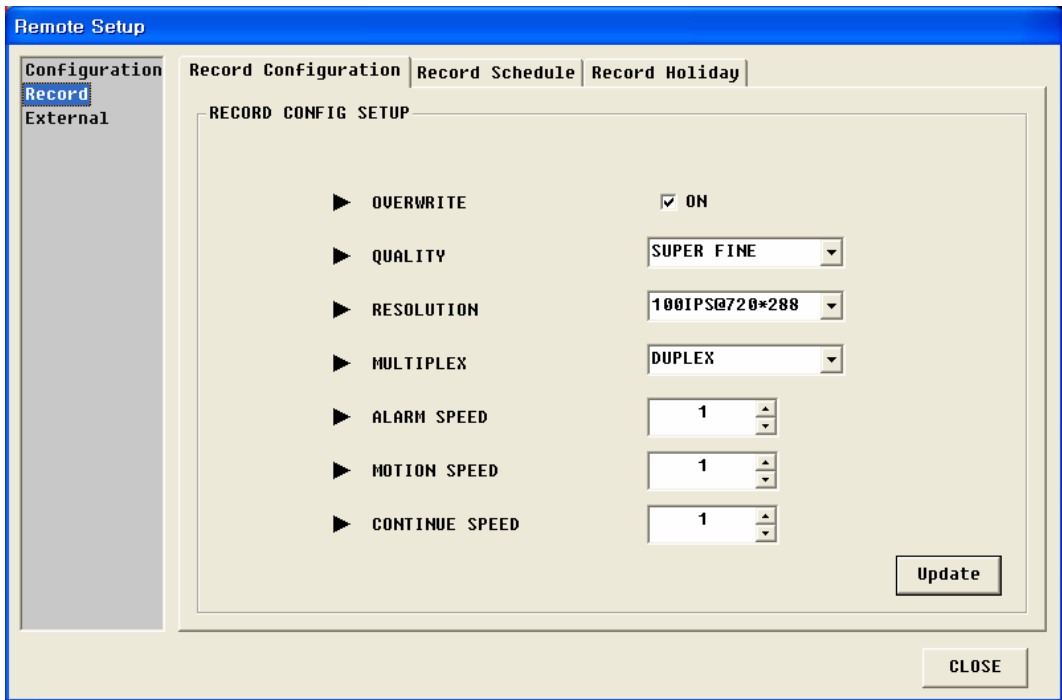
Interval Setting : Auto Switching & PIP Interval Setting



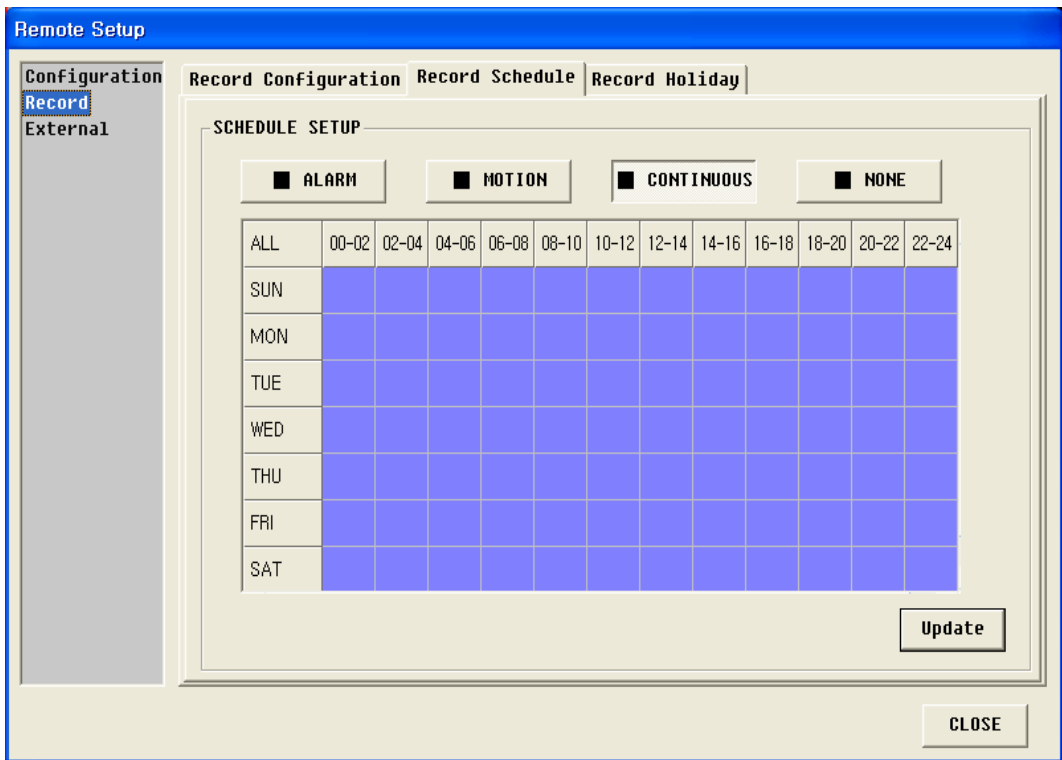
Password Setting : Change Password



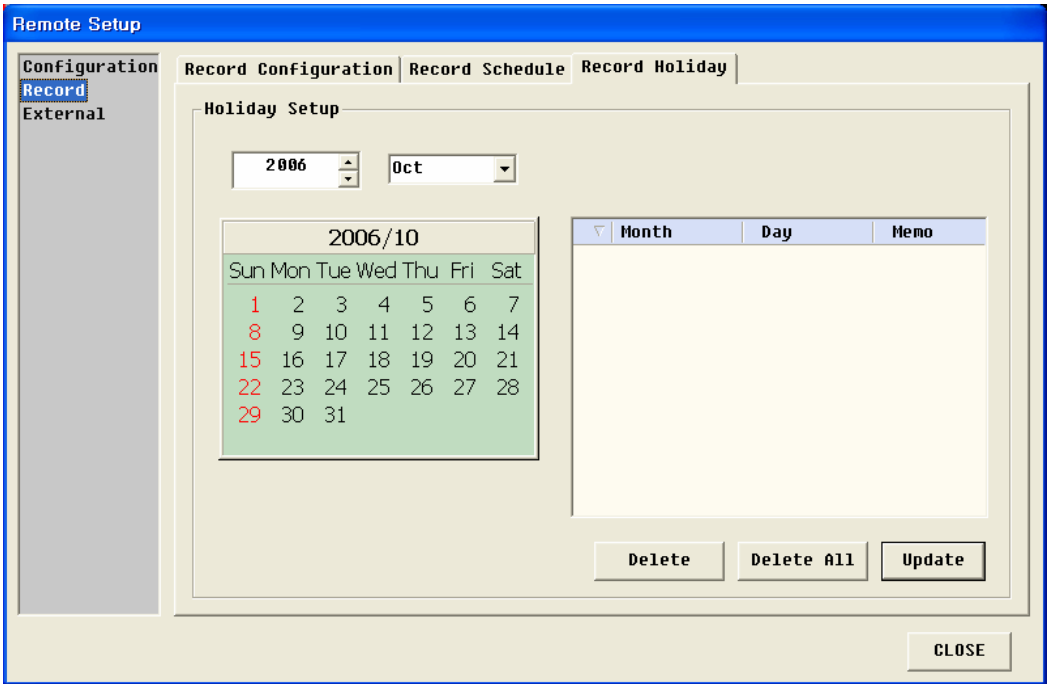
7-2. RECORD Setting –Record Configuration, Schedule, Holiday Setting
Record Configuration : Record Configuration Setting



Record Schedule Setting – Record Configuration based on Record time

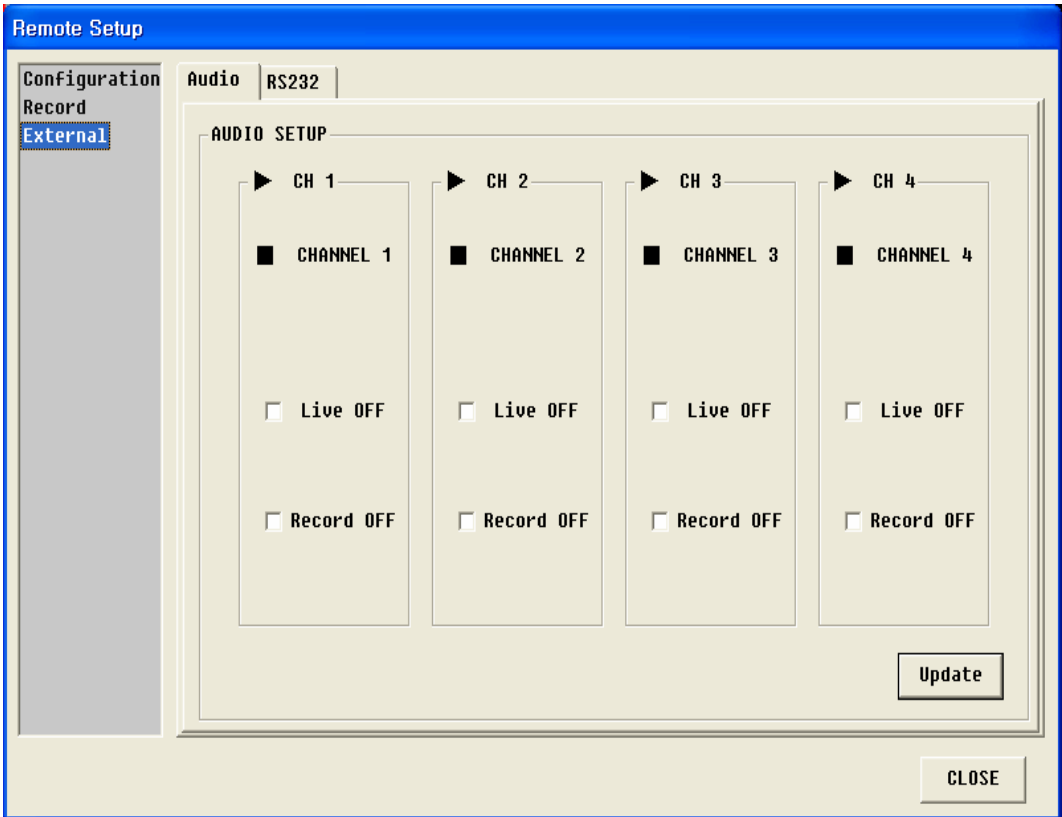


Record Holiday : Holiday Setting by 1 Year

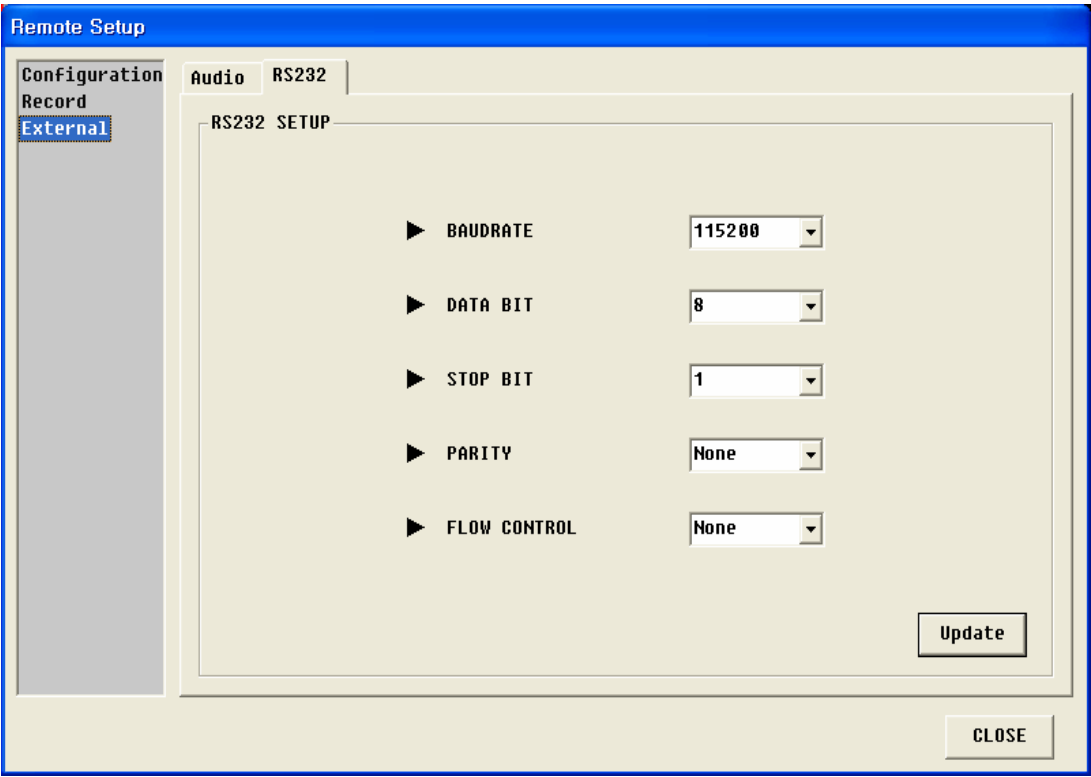


7-3. External Setting –RS-232 and Audio Setting

Audio Setting : Setting for Audio Recording



RS-232 Setting : Setting for Serial Communication



Chap 8. Event logger

8-1. Outline of Event Logger

It can systematically arrange Event from DVR for user and to link with CMS to check specific situation's information more efficiently.

Although CMS is not working, Event save/manage can be done from DVR.

How to set in DVR

Menu -> External Device -> TCP/IP Setup -> Event Log Setup



****Please set Record Setup "Alarm or Motion : Event occur condition**

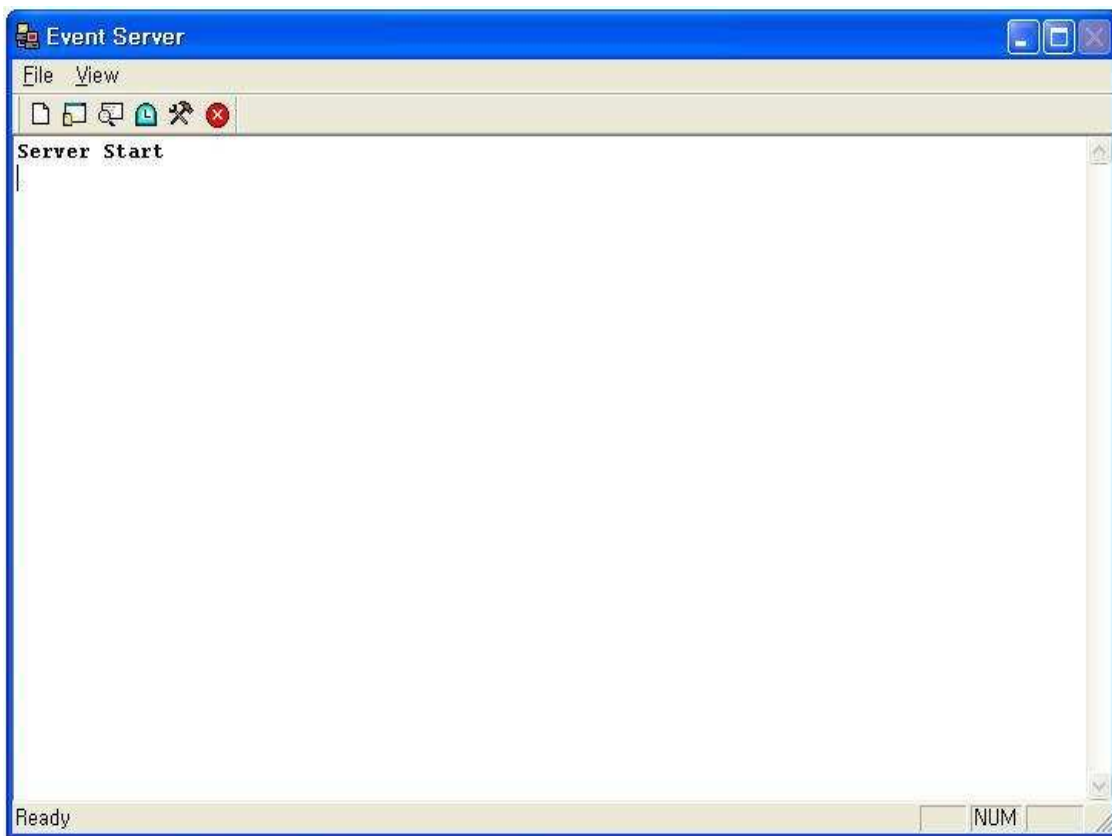
*Although Event Send Interval is 1, Why Event is not coming??

It is related to Configuration -> Interval Setup -> Event Record -> Event Update time. If Event Update Time is 10sec, although there are lots of events, the first event only recognized.

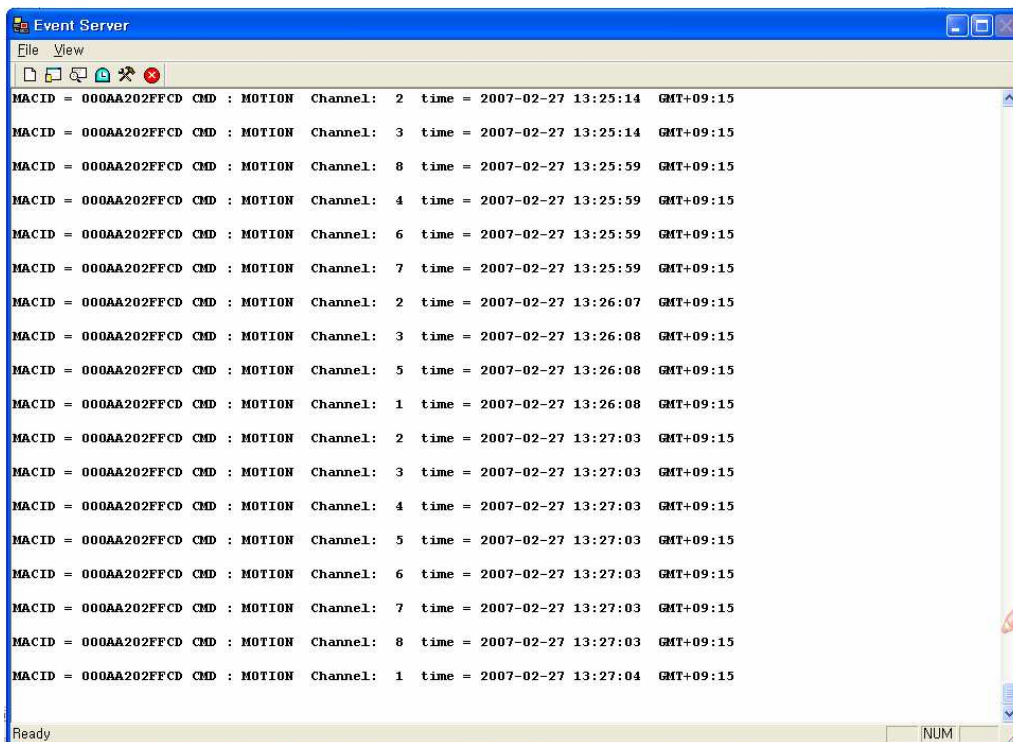
Execution Screen



First Screen : SERVER START :Message shown when normal operation after start.
If failed : SERVER FAILED : Message shown



Main Screen : It shows event information from DVR together with Mac Address.

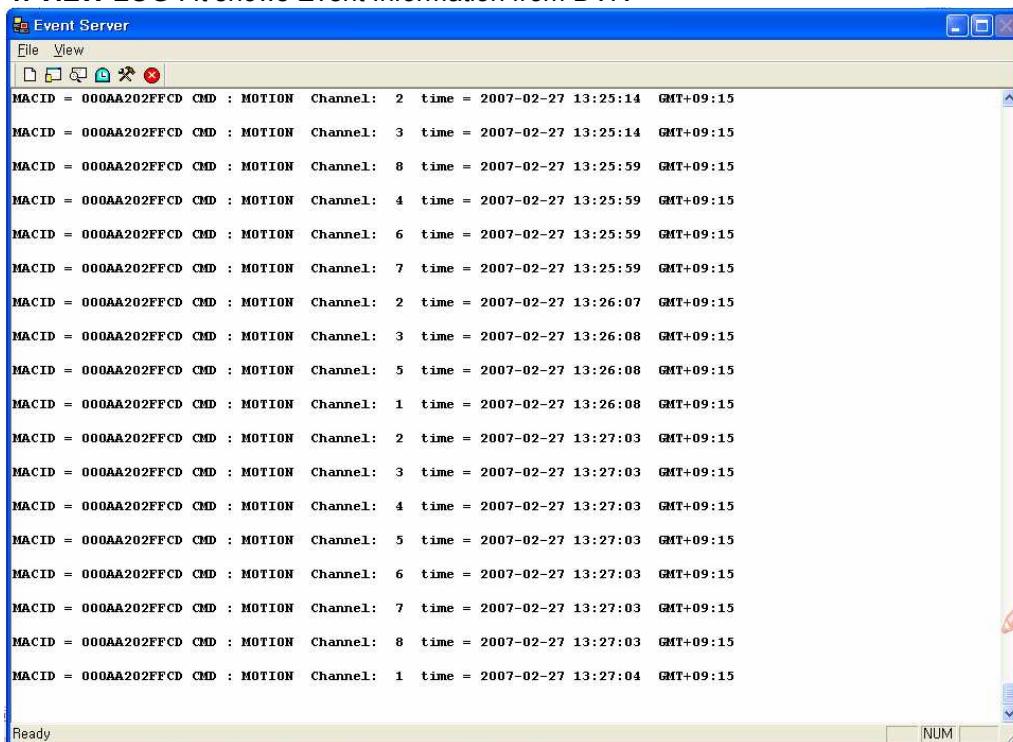


In TRAY ICON, When click right button of mouse, below pop-up menu shown.

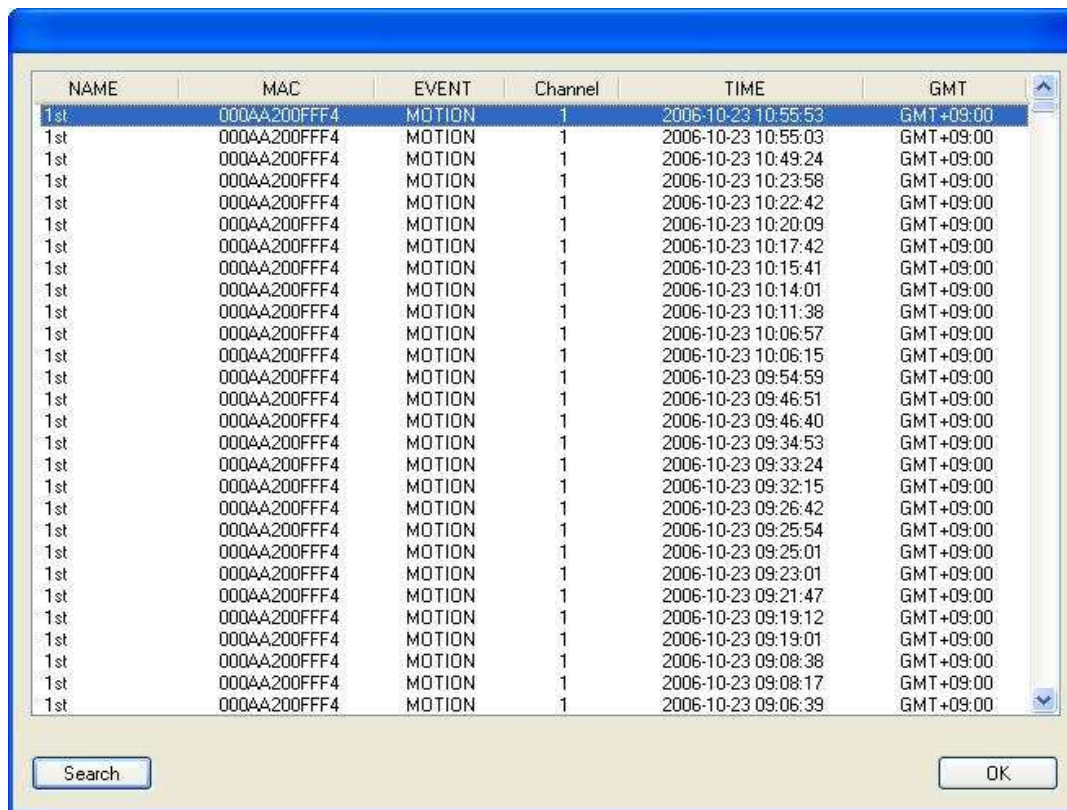


8-2. Explanation of Each Menu

1. VIEW LOG : It shows Event Information from DVR



2. VIEW DB : It shows Event list by DB.



2-1. Search Button : Conditionally (Date, Mac Address, Event) Search is available.

The SEARCH DB dialog box is divided into three main sections:

- Date Search:** Includes 'START DATE' and 'END DATE' dropdown menus, both currently set to '2006-10-27'. To the right of each date is a time dropdown menu set to '오후 3:17:34'.
- Name Or Mac Search:** Includes a 'MAC' dropdown menu with the value '000AA200FFF4' and an empty 'NAME' text input field.
- Event Search:** Contains three buttons: 'ALRAM', 'Motion Detection', and 'Video Loss'.

Buttons for 'Date Search', 'Name Search', and 'Event Search' are located to the left of their respective sections. 'Search' and 'Cancel' buttons are at the bottom of the dialog.

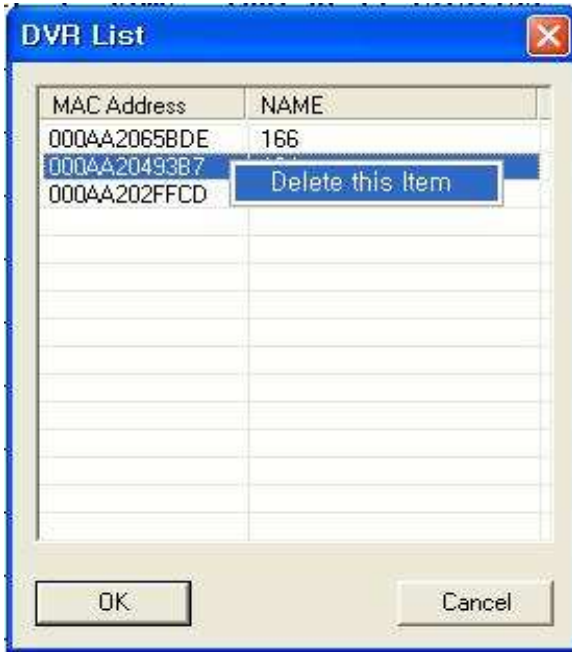
3-1. DVR VIEW : It shows Mac Address & Name saved DB
 *It means After Event Logger setting on DVR and accessed Data.
 If DVR is not registered in CMS, it does not show.

The DVR List dialog box displays a table with the following data:

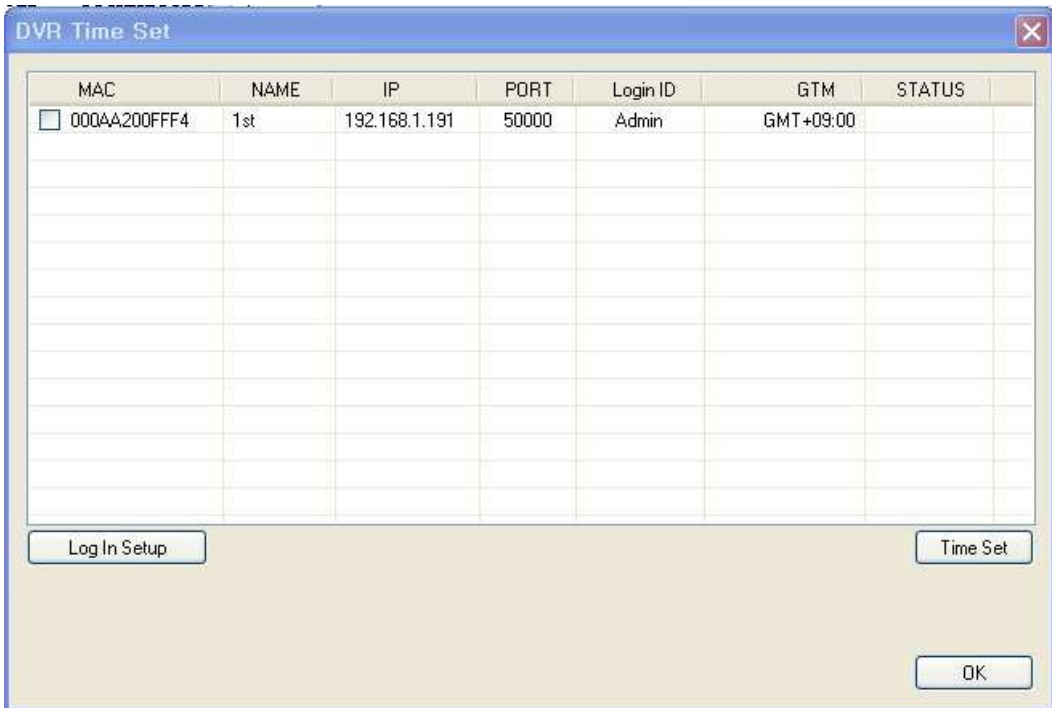
MAC Address	NAME
000AA200FFF4	1st

Buttons for 'OK' and 'Cancel' are located at the bottom of the dialog.

3-2. In DVR LIST VIEW, DVR data can be deleted : If DVR is deleted, DB data also removed.



4-1. Time Set Window : Window to set time with Remote DVR.



4-2. Log in Setup Window : Click “Log in setup” button, Log in info change Window shows

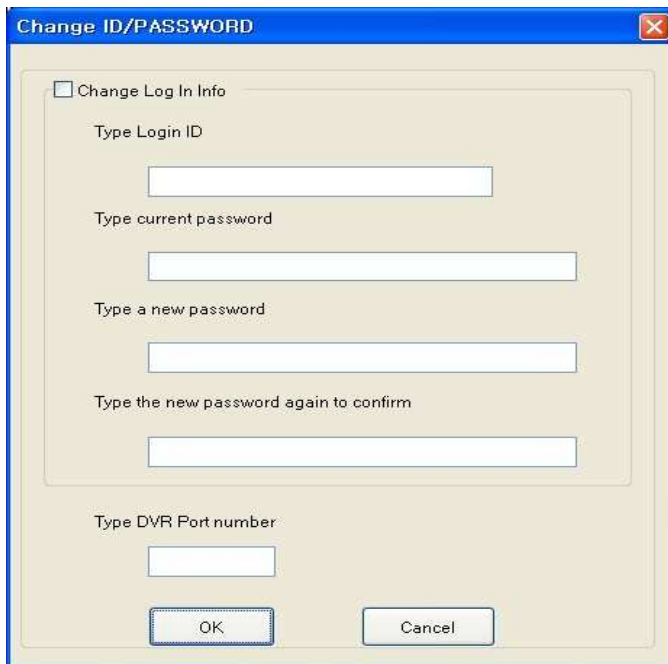
1) If no ID/PW Value set in CMS: Set new ID,P/W, PORT



The "Log In Setting" dialog box contains the following fields and controls:

- Type Login ID: [Text Input Field]
- Type a new password: [Text Input Field]
- Type the new password again to confirm: [Text Input Field]
- Type DVR Port number: [Text Input Field]
- Buttons: OK, Cancel

2) If yes ID/PW Value set in CMS : ID/PW can be changed



The "Change ID/PASSWORD" dialog box contains the following fields and controls:

- Change Log In Info
- Type Login ID: [Text Input Field]
- Type current password: [Text Input Field]
- Type a new password: [Text Input Field]
- Type the new password again to confirm: [Text Input Field]
- Type DVR Port number: [Text Input Field]
- Buttons: OK, Cancel

5. Config Window :Port info of Event Logger and DB Life Time info can be changed
DB Life Time : DB keeping time (If it set 1 month, for 1 month data save)
**PORT from DVR to Server should be the same as Port from DVR and Event Logger.



The image shows a 'Config' window with a blue title bar and a close button. It contains two main sections: 'Network' and 'DB Life Time'. The 'Network' section has a 'Port' field with the value '9988'. The 'DB Life Time' section is checked and contains 'Month' and 'Day' fields, both with the value '0'. An 'OK' button is located at the bottom of the window.

Section	Field	Value
Network	Port	9988
	DB Life Time	Checked
DB Life Time	Month	0
	Day	0



Central Monitoring System

Best Picture Quality - JPEG2000