

# How to set Remote-Viewer using DDNS

\* DDNS function is available from V1.30 firmware version of DVR.(4ch,8ch,16ch)

Please update DVR with V1.30 if DVR firmware version is under V1.30.

\* DDNS function using Remote Viewer is available from version 1. 10, 12, 13.

If your Remote viewer is under this version, please contact your vendor.

\* First, you need to register your DVR info on DDNS Web-server.

## A. Registration DVR at Internet Browser (DDNS Web-server)

1. Please access [www.j2kip.com](http://www.j2kip.com) and click Register to register Member ID.

Member Login

Member Register > New user

This website was created to provide a dynamic domain name system (DDNS) that allows DVR Systems to operate without a static IP from an Internet provider. This has been created exclusively for use with the Argus line of products. Complete the registration process to add your DVR to the system and enjoy the many benefits of DDNS.

\* ID and Password must be three characters or more  
\* We use User Email address to send information(User ID and Password) about your account.

Member ID

User Email

User Password

Confirm Password

Member ID

Password

[Forgot Password](#)

2. Please click DVR Add to register DVR.

http://www.j2kip.com/list.asp

WebFerret

DDNS Services for DVR Systems

Welcome enyong

Member

- Member Register
- My Dvr List
- My DVR Register
- DVR Web Client
- DVR Web Backup
- DVR Web Backup player

\* Click Web-Viewer icon on the right side of ACT to operate Web-Viewer.  
\* You should add www.j2kip.com on Trusted Sites(Tools -> Internet Options -> Security) at first webviewer installation.  
\* Webviewer Webbackup Dvr Edit Dvr Delet

DVR Name

No	Name	MAC	IP:Port	Last Modified	Act

3. Please click confirm after inputting DVR information (DVR Name and MAC Address only). Then, click 'confirm' button.

## My DVR Register

- \* Mac Address should be listed correctly without dash "-".
- \* Mac Address already listed can not be registered again.

DVR Name	<input type="text" value="superman"/>
MAC Address	<input type="text" value="000AA200F00C"/> * without dash "-"
IP Address	<input type="text"/>
IP Port	<input type="text"/>
<input type="button" value="Confirm"/>	

4. Now, DVR is listed on DDNS web server without IP and Port number.

DDNS service  
DYNAMIC DOMAIN NAME SYSTEM

[Home] [Logout] [Member Edit]

### DDNS Services for DVR Systems

This website was created to provide a dynamic domain name system (DDNS) that allows DVR Systems to operate without a static IP from an Internet provider. This has been created exclusively for use with the line of products. Complete the registration process to add your DVR to the system and enjoy the many benefits of DDNS.

Welcome jason

#### My DVR List

\* Click Web-Viewer icon on the right side of ACT to operate Web-Viewer.  
\* You should add www.j2kip.com on Trusted Sites(Tools -> Internet Options -> Security) at first webyviewer installation.  
\* : Webviewer : Webbackup : Dvr Edit : Dvr Delet

DVR Name   DVR Add

No	Name	MAC	IP:Port	Last Modified	Act
1	superman	00-0A-A2-00-F0-0C	:	2006-01-09 13:23:57	

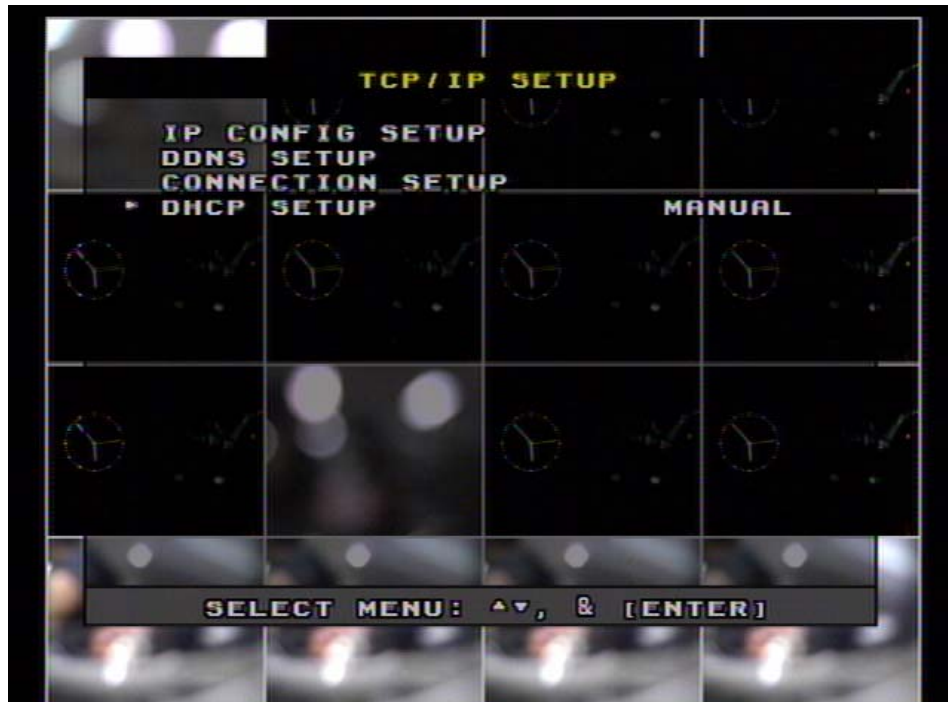
1

## B. DDNS set up at DVR

1. Go to Menu ⇒ External Device ⇒ TCP/IP Setup

2. Dynamic IP : Select AUTOMATIC at DHCP Setup

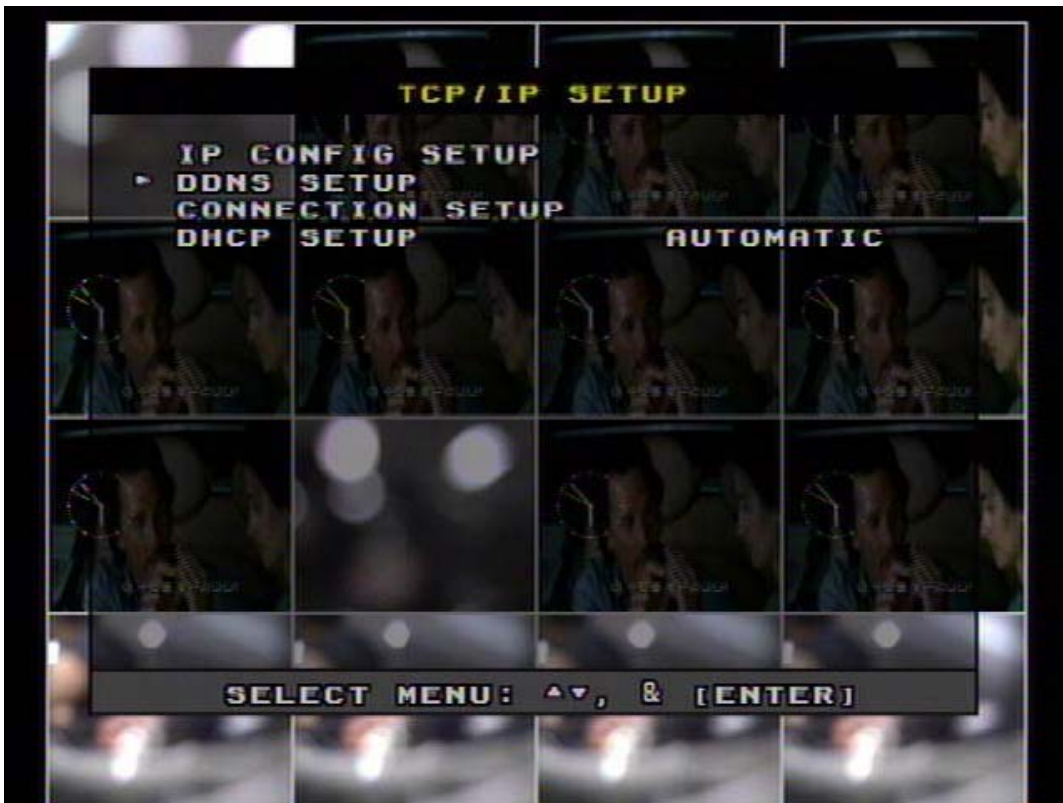
Static IP : Select MANUAL and input IP/DNS information manually



3. In case of Dynamic IP, execute DETECT IP to get IP information.



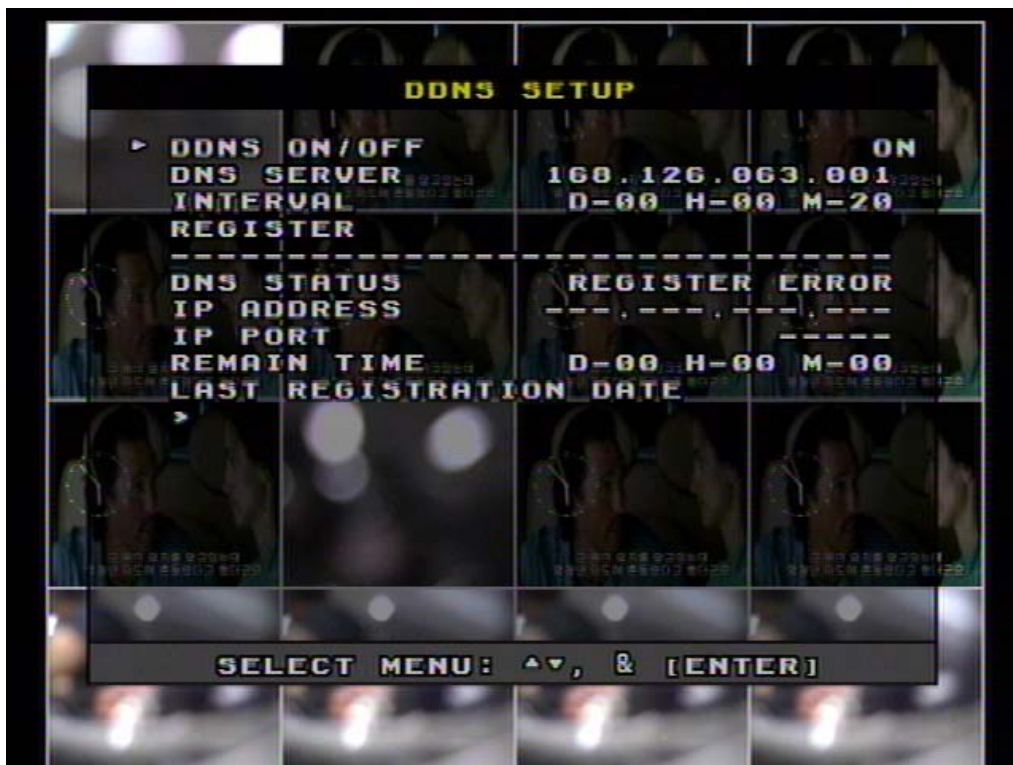
4. Select DDNS SETUP.



5. Set DDNS ON/OFF to **ON**.

DNS SERVER : In case of static IP, User should input DNS address manually.

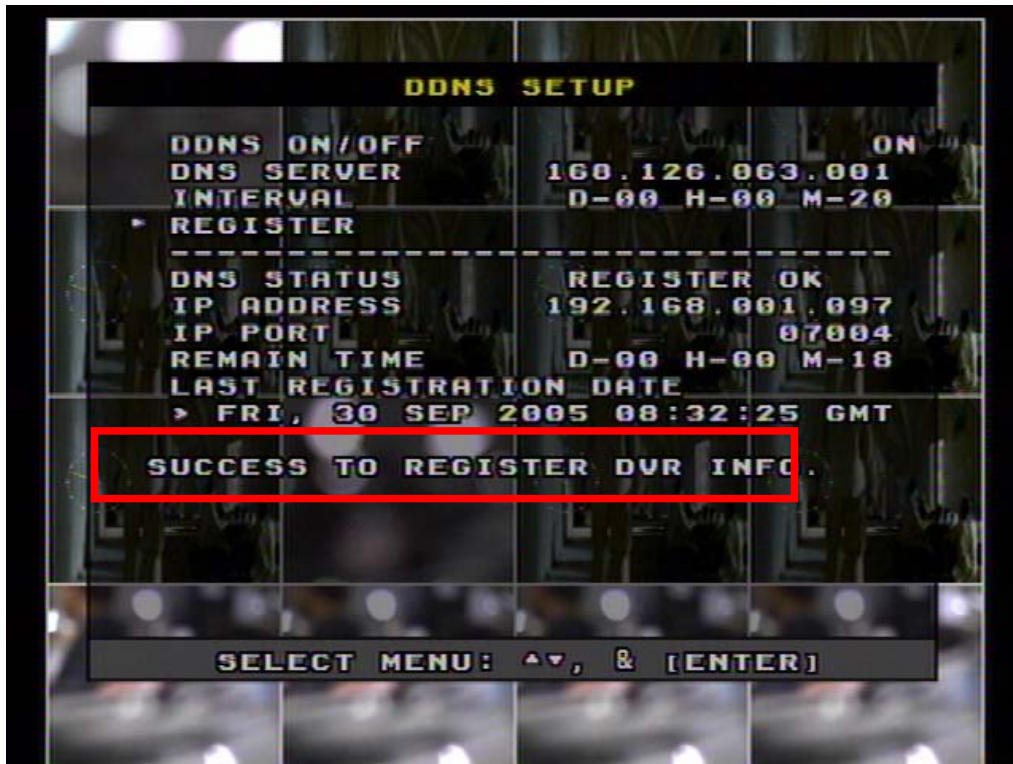
In case of dynamic IP, DNS address will be automatically assigned.



6. Go down to REGISTER and push ENTER button to renew IP registered on DDNS SERVER.

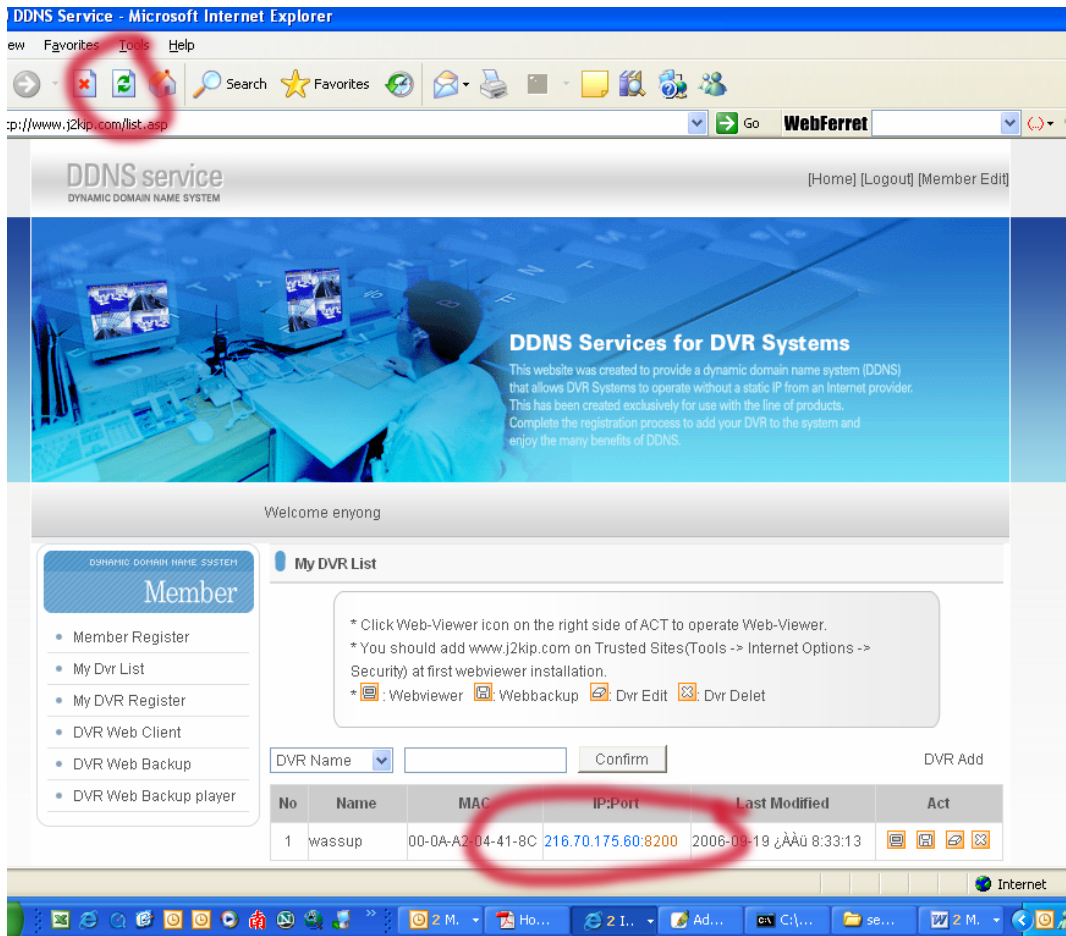
(Interval means connection interval time between DVR and DDNS SERVER.)

D = Day, H = Hour, M = Minute



Now DDNS setup at DVR is finished.

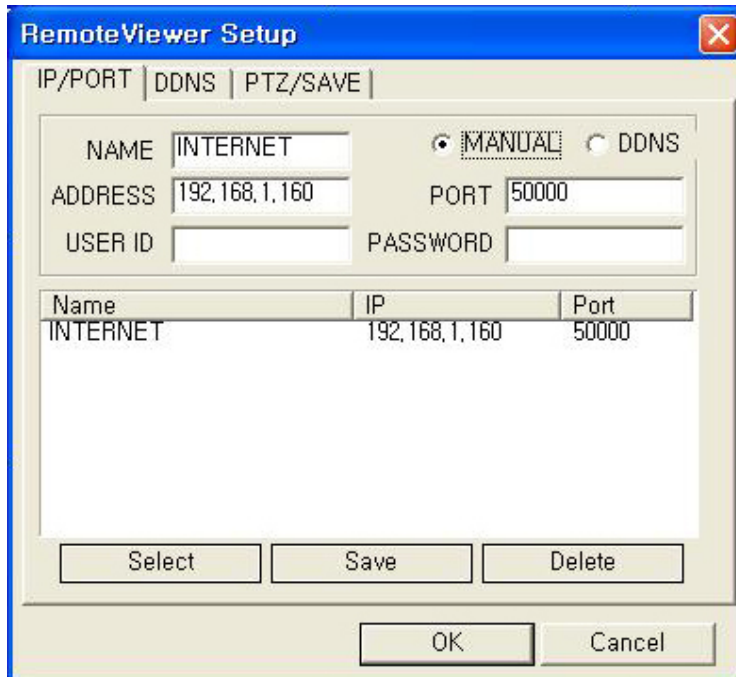
7. Go to your computer again after you see 'SUCCESS TO REGISTER DVR INFO' and then click 'refresh' button. Then, DDNS server automatically catches your DVR's IP address and Port number.



### C. Remote Viewer Setting and Connection

1. Please install Remote Viewer program in SoftwareCD.(Software Version 1. 10. 12.13)

Execute Remote Viewer software and click SETTING on the right side.



2. Select radio button of DDNS and choose tab of DDNS.

Input Member ID/Name as it is registered on DDNS Server, click Connect button.

Then, you can have IP address and port number as follows.

Member ID : Member ID registered on DDNS SERVER

Name : DVR Name registered on DDNS SERV

The image displays two screenshots of the 'RemoteViewer Setup' dialog box. The left screenshot shows the 'DDNS INFO' section with 'Member ID' set to 'GROUP' and 'Name' set to 'NAME'. The right screenshot shows the 'DVR INFO' section with 'IP Address' set to '220.70.26.51', 'Port' set to '6888', and 'User ID' set to 'admin'. Both screenshots show 'OK' and 'Cancel' buttons at the bottom.

3. Click CONNECT to access as follows.

POWER

2005 / AM 10

R-POS

P-POS

STATUS

CONNEN

ESTAB

SUPER @360°

SEQUEN

SETTIN

PLAYBA

PAN/T

ZOOM

CONNECT

DISCONNECT

DVR Remote Viewer

1	4	7
9	10	13
16	SCREEN DIVISION	

CHANNEL

1	2	3	4	5	6	7	8
9	10	11	12	13	14	15	16