

**NETWORK VIDEO SERVER**  

---

**U S E R M A N U A L**

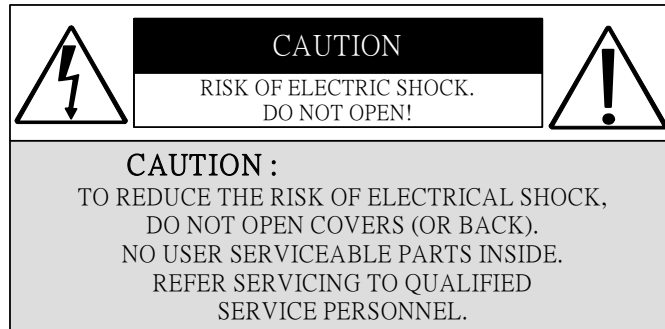


# Contents

1. SAFETY PRECAUTIONS.....	2
2. INTRODUCTION .....	3
2-1 Product Introduction.....	3
2-2 Application .....	3
3. FEATURES .....	4
4. PACKING LIST .....	5
5. INSTALLATION .....	6
5-1 System Configuration.....	6
5-1 Suggested pc equipment.....	6
6. NAME and FUNCTION of EACH PART .....	7
6-1 Front Panel Connections .....	7
6-2 Rear Panel Connections .....	8
7. VIDEO SERVER SETUP.....	9
7-1 Connect to Video Server .....	9
7-2 Using IPedit with DHCP Server .....	10
7-3. Using IPedit Without DHCP Server .....	11
7-4 Connection .....	12
8. FUNCTION SETUP.....	15
8-1 Main Page.....	15
8-2 PTZ Control .....	19
8-3 Setup.....	20
8-4 Advanced Setup .....	21
9. TROUBLESHOOTING .....	28
10. SPECIFICATION .....	29


The author assumes no responsibility for any errors or omissions that may appear in this document nor does it make a commitment to update the information herein.

# 1. SAFETY PRECAUTIONS



It is advised to read the Safety Precaution Guide through carefully before operating the product, to prevent any possible danger.

 **WARNING:** Alert the user to the presence of un-insulated “dangerous voltage”.

 **CAUTION:** Alert the user the presence of important operating and maintenance (Servicing) instructions in the literature accompanying the appliance.

The power cord is the main power connection. Therefore, constantly plug and unplug of the power cord might result in malfunction of the product.

**Do not install the product in an environment where the humidity is high.**

Unless the product is waterproof or weatherproof, otherwise poor image quality may quality.

**Do not drop the product or subject them to physical shocks.**

Except for vandal-proof or shockproof product, otherwise malfunctions may occur.

**Never keep the product to direct strong light.**

It can damage the product.

**Do not spill liquid of any kind on the product.**

If it gets wet, wipe it dry immediately. Alcohol or beverage can contain minerals that corrode the electronic components.

**Do not expose to extreme temperatures.**

Use the product at temperatures within 5° C~ 45° C

## 2. INTRODUCTION

### 2-1 Product Introduction

World leading technology not only perfect for office safety, personnel home security, public environments, industry surveillance, school, and so on. Quick and simple installation, the best choice for your own ultimate protection.

This well-designed video server can be easily connected by a camera or DVR (digital video server) and adding RJ45 Ethernet port to your PC, allows real-time viewing and control over standard web browser.

Two types of live monitoring:

1. Connected by a camera for remote image capture or recording. When motion or alarm has been triggered an e-mail will be send out to notify the user.
2. Connected by a DVR (digital video recorder) for remote control management. Supports LAN, PPPOE, and DDNS online connection method.

### 2-2 Application

**Security:**

ATM (auto teller machine), bank, gas station, shop and parking lot.

**Factory/ Office:**

Factory, warehouse, remote technology support, conference room, and outdoor parking lot.

**Education/ Military/ Government Organization:**

Important facilities, important areas, rapid transit system, and railroad safety.

**Recreation/ Activities:**

Sports and news broadcast.

**Home:**

Elevator, doorway, community safety, and hotels.

**Hospital/ Kindergarten:**

Hospital and isolated ward, home for the aged, kindergarten, and baby nourishing center.

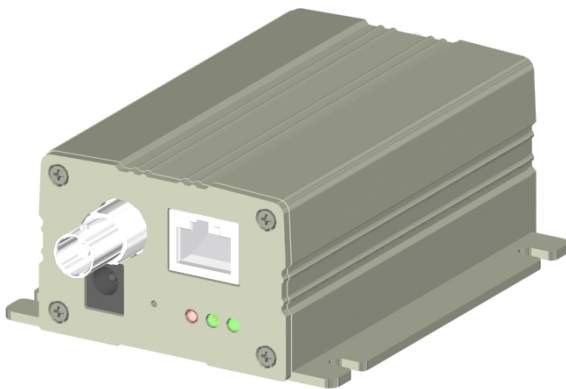
## 3. FEATURES

- **Multiple Function**  
Video Server is a well-designed video server. Connecting control device such as a DVR to the Video Server for remote control recording and playback.
- **Provides Remote Control**  
Enables remote video monitoring via internet. Applicable online connections: LAN, PPPoE, and DDNS.
- **Alarm Trigger**  
When an alarm has been triggered e-mail alert will be received.
- **Supports up to 9 Video Server Connections**  
Enables 9-split screen display monitoring.
- **Provides PTZ control of PELCO D and P cameras.** After connection, one may setup different real-time monitoring locations.
- **Supports NO or NC Alarm Output**  
For alarm function, connect an external sound device to the video server.

## 4. PACKING LIST

Check to make sure all of the items shown below are included in your product package. If something is missing, contact your dealer as soon as possible.

(1) Video Server



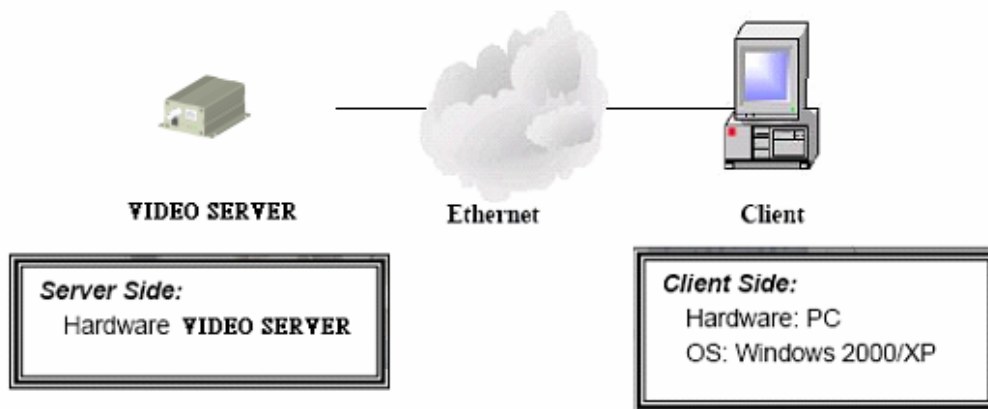
(2) Power adapter



# 5. INSTALLATION

## 5-1 System Configuration

### Client-Server Definition

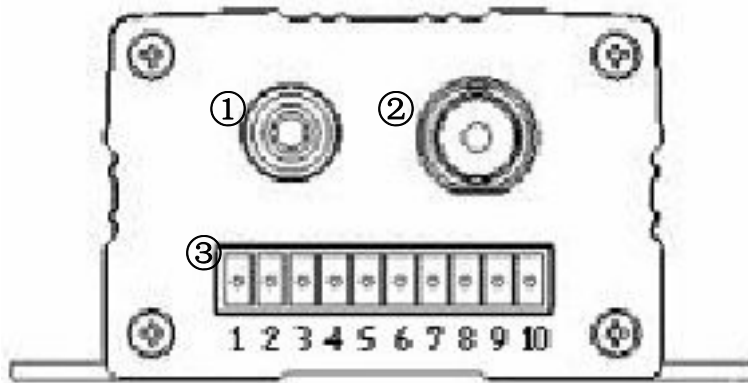


## 5-2 Suggested PC Equipment

CPU	1G (Above)
RAM	256M (Above)
Sound Card	YES
Office System (OS)	Microsoft Windows 2000/ XP
Monitor Resolution	1024x768 (Above)

## 6. NAME and FUNCTION of EACH PART

### 6-1 Front Panel Connections



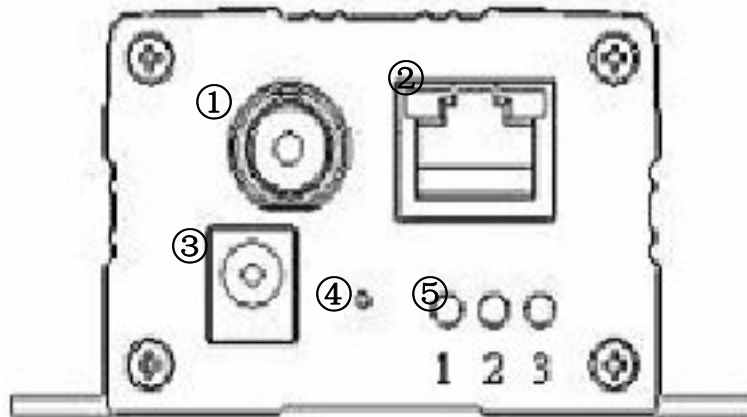
① AUDIO IN

② VIDEO IN

③ I/O TERMINAL BLOCK

1	RS232TX
2	RS232RX
3	GND
4	RS485-
5	RS485+
6	RELAY_COM
7	RELAY_NO
8	RELAY_NC
9	ALARM
10	GND

## 6-2 Rear Panel Connections



- ① VIDEO OUT
- ② ETHERNET
- ③ POWER JACK (DC 12V)
- ④ RESET
- ⑤ STATUS LED

LED Indicator: (1)PWR (2)LINK (3)ACT

## 7. VIDEO SERVER SETUP

Before installing the Network DVR, you need to first setup an IP Address, connect using cross-over connection, ADSL Modem or LAN Hub, and use IPedit.exe to setup the Video Server.

Note: Before using PPPoE and DDNS connection method, one must first setup an IP Address (using IPedit.exe) to enable connection.

### 7-1 Connect to Video Server

Three Methods for Connecting Video Server:

1. LAN or Static IP Connection.
2. PPPoE Connection.
3. DDNS Connection.

#### 7-1-1 Online Connection Using LAN or Static IP

Please refer to 7-2 Online using DHCP Server.

#### 7-1-2 Online Connection Using ADSL (PPPoE)

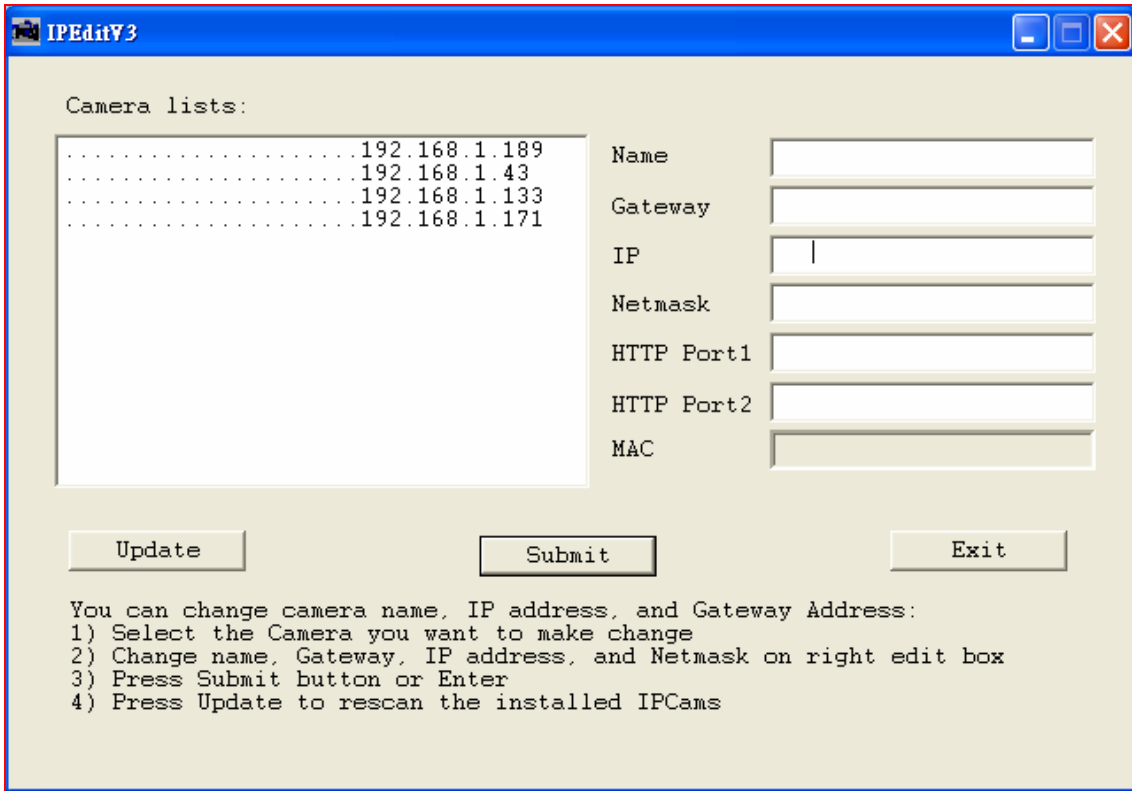
Please refer to 8-4-4 Network (PPPoE Connection Method).

#### 7-1-3 Online Connection Using DDNS

The DDNS service provides the “dynamic” domain name service to dynamic IP users via a cable or ADSL connection. Once you’ve decided to apply this function, please register your domain name at <http://www.dyndns.org> (this website supports register free DDNS service). Paid DNS service is applied to long-term users. For more information, please refer to “8.4.5 DDNS Setup”.

## 7-2 Using IPedit with DHCP Server

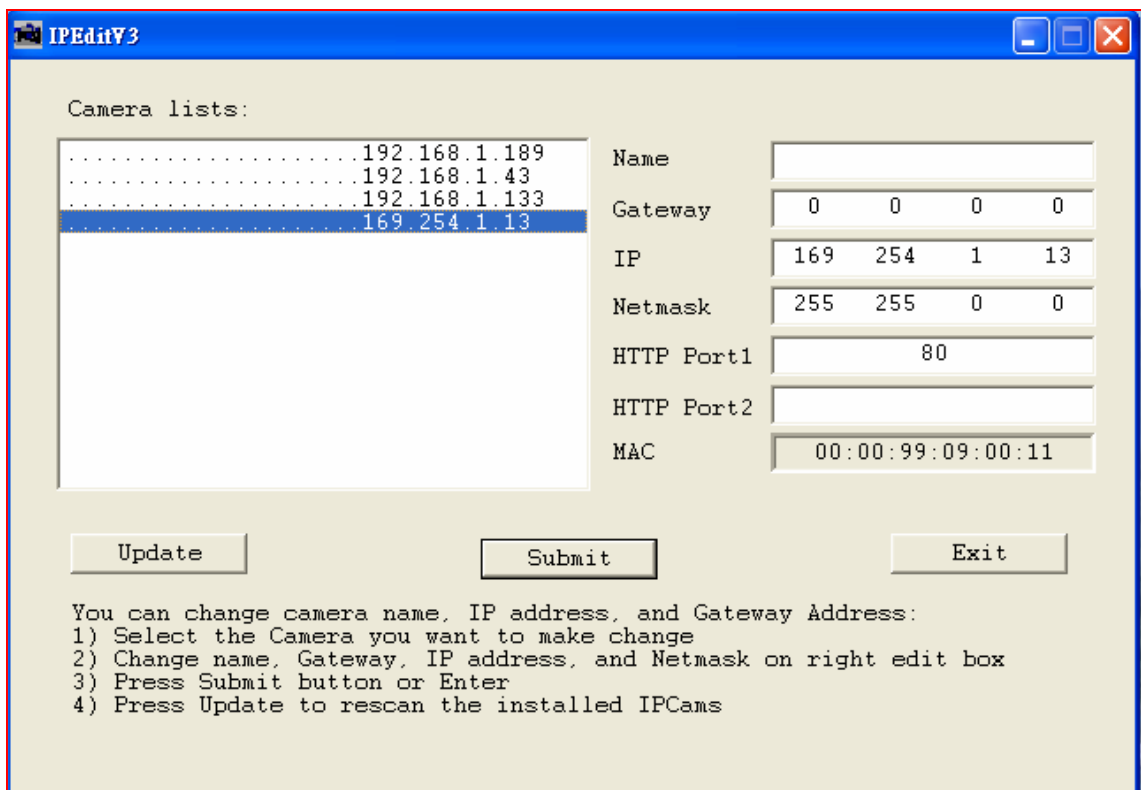
DHCP will assign an IP address to the Video Server when using DHCP connection method. Please follow the correct Gateway, IP address, and Netmask setup, when the Video Server is without an IP address allocated by the DHCP server.



Using IPedit with DHCP Server

## 7-3 Using IPedit Without DHCP Server

1. Use IPedit.exe to find the installed Video Server.
2. The Video Server without an IP Address allocated by the DHCP Server will have a default IP Address of 169.254.1.13.
3. Select the desired Video Server on Camera List Window.
4. Click the IP Address and the default configuration will be shown on the right window.
5. Please setup Gateway, IP Address, and Netmask value according to your PC network setting value (When network setting value is unknown, under DOS mode enter "IPCONFIG" to access the setting value).



Using IPedit without DHCP Server

After the "Submit" button is clicked, the IP information of the Video Server will be updated.

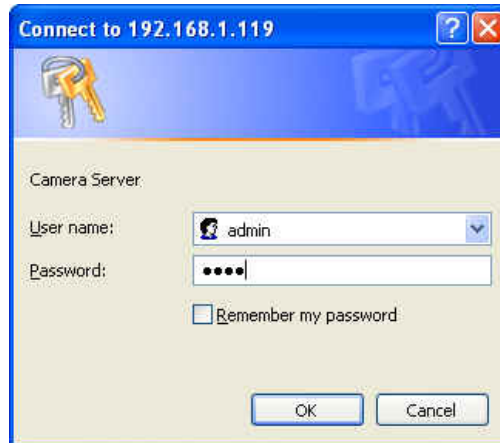
## 7-4 Connection

Start the Internet Explorer, enter the IP Address of the Video Server into the Address field, such as 192.168.1.31 or click twice on IPedit list.

Before connection, “User name” and “Password” will be requested:

Default User Name: **admin**

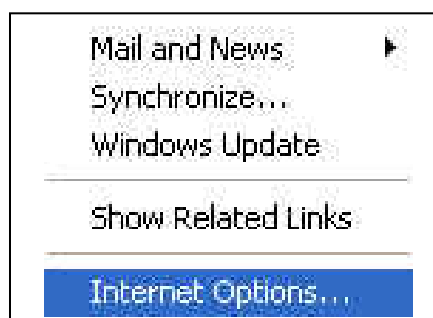
Default Password: **1234**



### 7.4.1 Install ActiveX

Before entering remote connection, please install ActiveX and check your browser setup by following the procedures below:

a. Open Internet Explorer under “Tools”, select “Internet Options”.

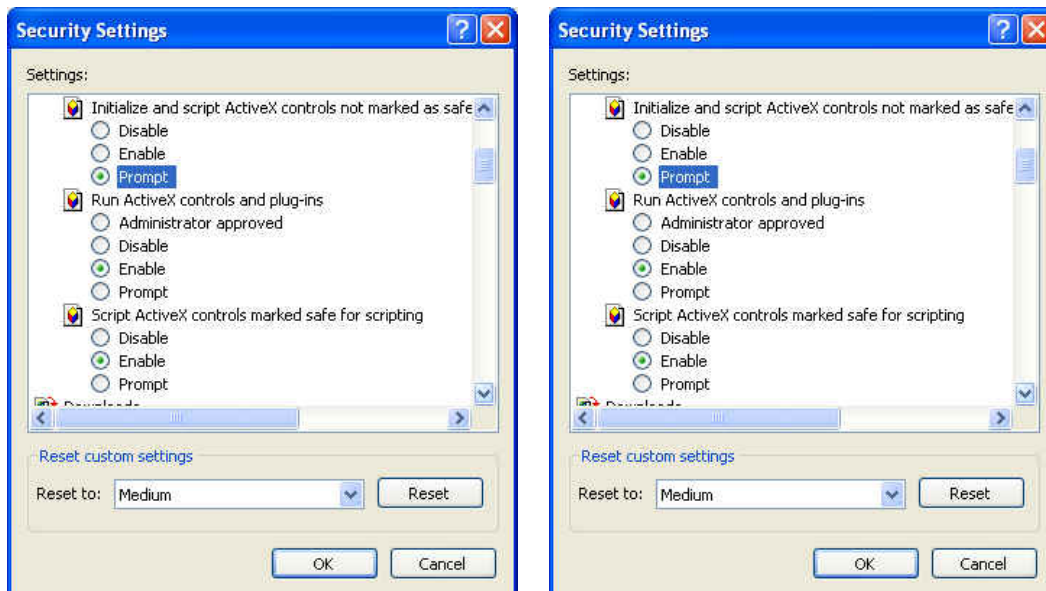


Tools → Internet Options

b. Select “Security”, and then press “Custom Level”.

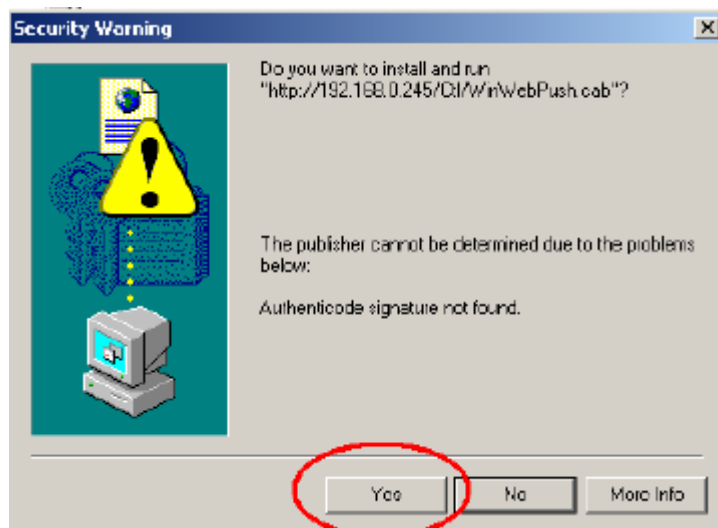


Security -> Custom Level



Enable ActiveX Control

The graphic below will be shown when first time installing ActiveX Mode. Please, select “Yes” to accept installation.



Download ActiveX Control

Live view will be displayed when installation is successful.

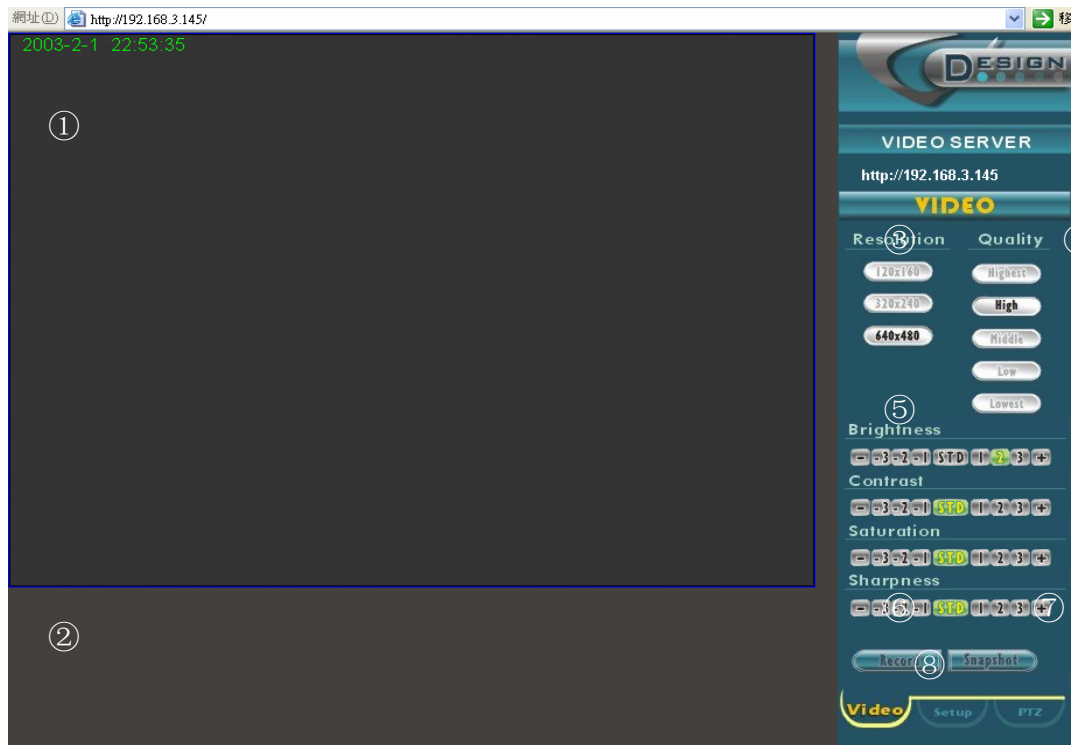


Live display under ActiveX mode

# 8. FUNCTION SETUP

## 8-1 Main Page

Best browsing resolution is 1027x768.



Main Page

### ① Live Display

- View/ Make changes on image display
- Image Recording/ Record function setup
- Save Current Picture/ Save the current image
- Welcome! Administrator/ Display current user name
- About/ Version description



## 8-1-1 View

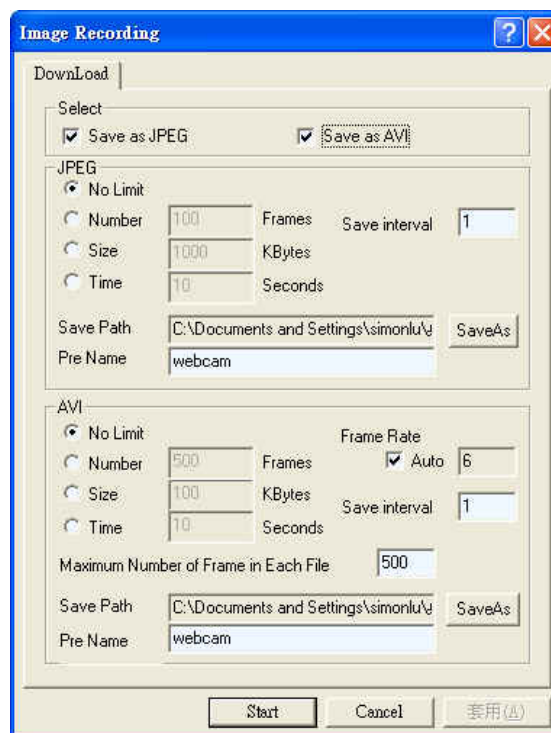
Three types of display method:

1. Resizable: Adjustable image size.
2. Actual Size: The actual image size.
3. Status Bar: Reveals current status.

## 8-1-2 Image Recording

Image Recording Setup Display:

1. Save as JPEG: Save as picture file
2. Save as AVI: Save as AVI animation file



### 8-1-2-1 Save as JPEG:

- No Limit: Unrestricted image storage (continuous).
- Number: Image storage according to “number”.
- Save interval: Image storage according to “1/10 second” (e.g.: Enter “10”, then 1 frame is stored per second. Enter “50”, then 1 frame is stored in 5 seconds).
- Size: Image storage according to “size”.
- Time: Image storage according to “time”.
- Save Path: Image storage according to “Save Path”.
- Pre Name: Image storage according to “Prefix Name”.

### 8-1-3-2 Save as AVI:

- No Limit: Unrestricted image storage (continuous).
- Number: Image storage according to “number”.
- Size: Image storage according to “size”.
- Frame Rate: Setup how frames per second.
- Time: Image storage according to “time”.
- Maximum Number of Frame in Each File: Image storage according to “maximum frame”.
- Save Path: Image storage according to “Save Path”.
- Pre Name: Image storage according to “Prefix Name”.
- Save Interval: Image storage according to “Save Interval”, milliseconds per unit.

#### ② DVR Control

When the system is DVR, DVR control is shown by the diagram below:



Corresponding DVR connection (16CH or 8CH).

#### ③ Resolution

- 176x144
- 352x288
- 704x576
- 120x160
- 320x240
- 640x480

Note: Resolution may differ according to different camera types (ex.: NTSC = 120x160, 320x240, or 640x480).

#### ④ Quality Setting

Provides 5 image quality settings:

Highest

High

Medium

Low

Lowest

⑤ **Brightness/ Contrast/ Saturation/ Sharpness:**

- : Mini. Value

STD: Pre-set Value

+: Max. Value

The higher values are shown to the right and descend in value as you go to the left.

⑥ **Record Setup:**

Please refer to 8-1-3 Image Recording.

⑦ **Snapshot:**

Press this button to capture one live image and press “RIGHT” button to store the image.

⑧ **Label Selection:**

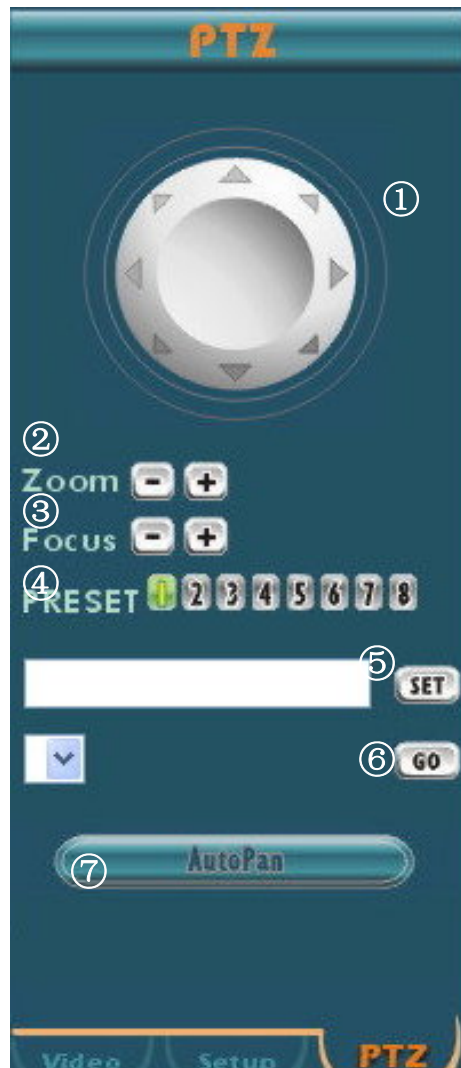
Video: Live Adjustment Selection

Setup: Advance Setup

PTZ: PTZ Control Interface

## 8-2 PTZ Control

Supports PTZ control of PELCO D and P cameras, setup can be made by selecting Setup selection, enter Configuration selection, and make the necessary setup on the System page (Setup => Configuration => System).

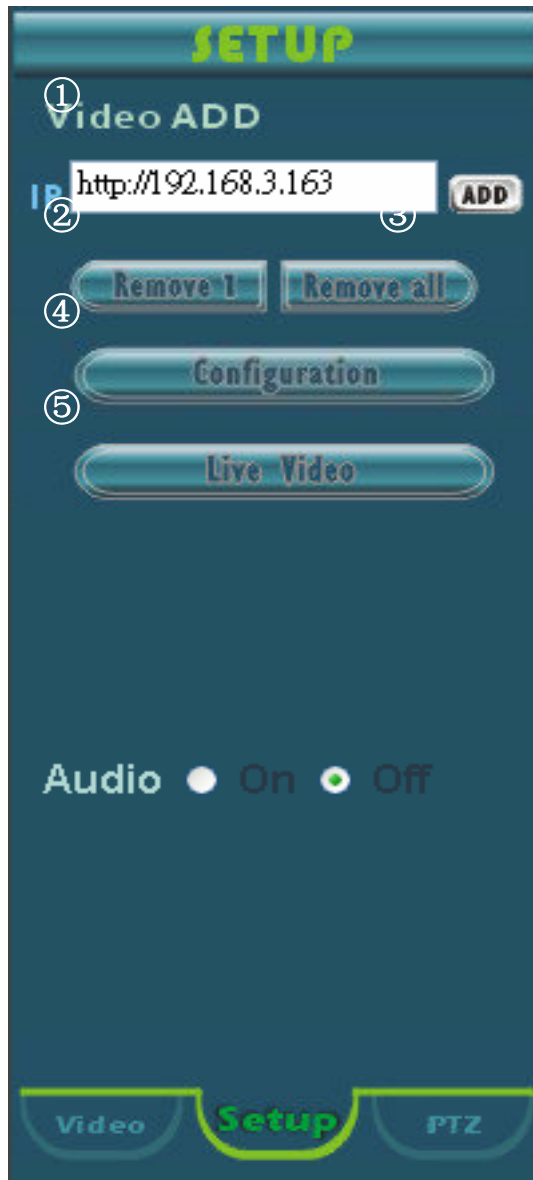


PTZ control adjustment.

- ① PTZ Control Jog: Control PTZ movement.
- ② Zoom: Controls the picture size (zoom-in/ zoom-out).
- ③ Focus: Controls the clarity of the image (Switch off the Auto Focus function, before applying this function).
- ④ PRESET: Select monitoring point (max. 8 points)
- ⑤ SET: Enter a name (Max. English Characters = 9 and Chinese Characters =4), then click "SET" button to save the setting (It auto saves under Go menu list).

- ⑥ GO: Under GO menu list, select the monitoring point already setup, then click “GO” to proceed.
- ⑦ AutoPan: Run auto-pan (need to be operated by suggested keyboard brand).

### 8-3 Setup



- ① Video Add: Enter an IP to view another Video Server (Max. IP setup = 9).
- ② Remove 1: Remove selected video server or cameras.
- ③ Remove All: Remove all video server or cameras.
- ④ Configuration: Advance setup.
- ⑤ Live Video: Return to live display.
- ⑥ Audio: Remote control, switch ON/ OFF for audio (IE audio default= OFF).

## 8-4 Advanced Setup

Only “Admin” can select “configuration” (advanced setup)

### 8-4-1 System

**System Setting**

**System Select**

① System Select  Video Server  DVR

**PTZ Select**

② PTZ Select D-MAX  
ID Select 1  
Baud Rate Select 9600

**HTTP Port**

③ Port Select Port 1 80  
Port 2 0

④ Reboot ⑤ Firmware update ⑥ Restore factory default configuration

- ① System Select: Video Server supports control of only certain DVR (please consult your local dealer for more information).
- ② PTZ Select: PTZ ID (D: 1~254; P: 1~32) and 8 Baud Rate selection (1200/ 2400/ 4800/ 9600/ 19200/ 38400/ 57600/ 115200).
- ③ Port Select: IP sharing device enables switching port function, setup the port and enter http://XX.XXX.X.XX:8887 (as shown on the diagram above). Please restart the Video Server after the setup has been completed.
- ④ Reboot: Restart the Video Server.
- ⑤ Firmware update: Updates the firmware.
- ⑥ Restore factory default configuration: Click “Restore factory default configuration” the button to return to factory default settings (Please restart the Video Server after setup has been completed), or by pressing the Reset button situated on the rear panel (Refer to Pg. 8 “Rear Panel Connection”) for 5 seconds then release.

## 8-4-2 Time

**Date & Time Setting**

Now Time

Modify System Date & Time

NTP

① Server 2/2/2003 1:13:0 GMT+08:00

② Date 2/2/2003

Time 1:12:57

Time Zone GMT+08:00

Use Ntp  Yes  No

③ Ntp Server 192.43.244.18

- ① Server: Display Video Server time.
- ② Modify System Date & Time: Modify time and date manually (Without internal clock, therefore after system restarts the time is shown by default time).
- ③ NTP (Network Time Protocol): Pre-set connection: 192.43.244.18. To return to factory default, please select NO and restart the Video Server or perform manual modification.



When time is entered incorrectly, a message informing error and an example will be displayed, as shown above (date interval separated by “/” and time interval separated by “:” ).

## 8-4-3 Users

The screenshot shows a web interface for user management. On the left is a vertical sidebar with four sections: 'Users Setting' (highlighted in yellow), 'Authorization', 'New user / Change Password', 'Delete User', and 'Current Users'. The main content area is divided into four sections, each marked with a circled number:

- ① Authorization: A form with two radio buttons, 'Needed' (selected) and 'No Need', and an 'OK' button.
- ② New user / Change Password: A form with three input fields labeled 'Username', 'Password', and 'Confirm', and a 'Set/Change' button.
- ③ Delete User: A form with a 'Username' label, a dropdown menu showing '1234', and a 'Delete' button.
- ④ Current Users: A single input field containing the text '0:1234'.

- ① Authorization: User Authorization Setting “Needed/ No Need”.
- ② New user/ Change Password: Add user or change password (Max. user = 30).
- ③ Delete User: Delete user account.
- ④ Current Users: Currently registered users.

## 8-4-4 Network

**NetWork Setting**

Lan Setting

①  Manually

IP Address	0.0.0.0
Subnet Mask	0.0.0.0
Default Gateway	0.0.0.0

②  Automatically by DHCP

DNS

③

DNS0	0.0.0.0
DNS1	0.0.0.0
DNS2	0.0.0.0

OK

Remote Ip Assignment

④

PPPoE Disconnect

Dial On Power Up

Username	87359388@hinet.net
Password	*****

Send mail (about new IP) after connected

Mail Server	msa.hinet.net
Username	tsjoe
Password	*****
Sender's Mail Box	tsj@hotmail.com
Receiver's Mail Box	johin@hotmail.com
Subject	IP Camera PPP Dialed!

OK

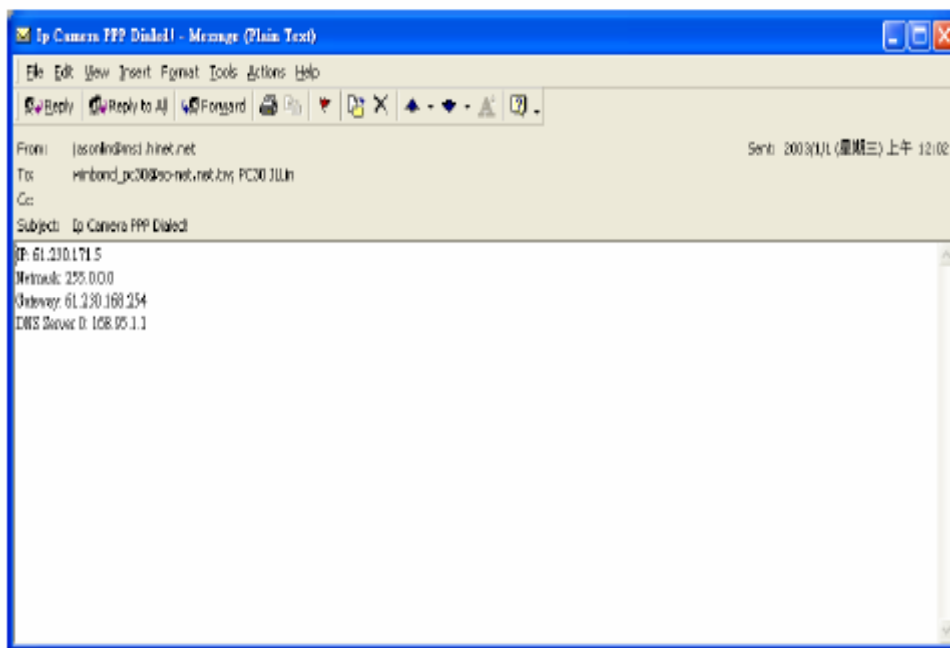
PPPoE Information

⑤

Local IP:
Remote IP:
Netmask:
Geteway:
DNS0:
DNS1:
DNS2:

Note: Please reboot after setup.

- ① Lan Setting: LAN IP address setting is the same as IPedit.
- ② DHCP: Select item “Automatically by DHCP” to gain an IP address.
- ③ DNS: Fixed IP users needs to setup an IP address, please contact your local ISP dealer.
- ④ PPPoE: Connecting using ADSL, please contact your local ISP dealer.  
Select item “Send mail (about new IP) after connected”, mail will automatically be sent when connected to the ISP (as shown below).
- ⑤ Display PPPoE IP Information.



## 8-4-5 DDNS

**Dynamic DNS**

DDNS Account Setting

①

Enable  Disable

UserName

Password

DomainName

Submit

① DDNS: To apply dynamic IP address, you may register at DDNS Server:  
<http://www.dyndns.org>

To setup follow the steps below:

1. Register at DDNS Server: <http://www.dyndns.org>
2. Apply domain name.
3. Dial-up using ADSL Router: Click “Enable” button, then input your UserName, Password, and DomainName (Similar to registering at DDNS Server).

Note: Please reboot after setup.

## 8-4-6 Alarm

**Alarm Setting**

**I/O Input Trigger**

Enable  Disable

NO  NC

Relay: Bistable

Subject:

OK

**Mail Setting**

Mail Server

Username

Password

Sender's Mail Box

Receiver's Mail Box

OK

① I/O Input Trigger:

- Setup alarm input/ output function. Select Disable before selecting NO or NC.
- Relay supports Bistable function (0.5S\1S\2S\5S\10S).
- Subject: Enter mail subject.

② Mail Set: Alarm may only be notified by text message.

Note: Mail function does not apply to DVR control.

## 9. TROUBLESHOOTING

<b>Question</b>	<b>Answer</b>
Unable to detect the VIDEO SERVER	Reconnect the internet line and make sure that it properly connected and then restart the system.
No picture and sound	Check that everything is connected properly (camera or microphone). Reconnect everything, make sure that the signal line is properly connected and then restart the system.
No images is shown on the web page	Please follow “7.4.1 Install ActiveX”, setup the IE, and install ActiveX.
IPedit unable to detect the IP Address	Please check your software, some software (e.g.: firewall or anti-virus software) may block-out IPedit software.

## 10. SPECIFICATION

Video	Format	NTSC/ PAL Auto Detection
	Compression	M-JPEG
	Input	BNC x 1 (1.0 Vp-p./ 75 Ohms)
	Output	Loop Back: BNC x 1 (1.0 Vp-p./ 75 Ohms)
Audio	Input	RCA x 1 (mono)
	Compression	AC-97
Display	Resolution	Max. 640 x 480 (NTSC)/ 704 x 576 (PAL)
	Frame Rate	Max. 20 fps
Recording	Resolution	Max. 640 x 480 (NTSC)/ 704 x 576 (PAL)
	Frame Rate	Max. 20 fps
	Quality	High/ Low
	Mode	Manual
Alarm	Input/ Output	1/ 1(NO NC)
	Triggered Mode	sensor input
	Action	relay output/ mail send
Network	Ethernet	10/100BaseT Ethernet (RJ45)
	Protocol	TCP/IP/ HTTP/ PPPoE/ DNS/ DDNS/ DHCP/ SMTP
SerialConnectors		RS232/485
Pan / Tilt / Zoom Control		Yes
Backup Device		IE
Power Adaptor		DC Adaptor 12V/ 0.5A, AC100~240 V
LED Indicators		PWR/ LINK/ ACT
Weight		0.5 kg
Dimensions (mm)		60 x 40 x 120 mm (WxHxD)
Operation Temperature & Humidity		+5°C ~ +45°C, Less Than 90%

*(Note: Design and specifications are subject to change without prior notice.)*